



VILLAGE NURSERY

2024

*The
Glory of
Gardening
starts
with us!*

PLEASANTVILLE

2 KM ON LAKE CENTRE RD.
ROUTE 331 SOUTH


e-mail: dazee@villagenursery.ca

902-543-5649

Visit villagenursery.ca
... where Quality Grows

A Letter from Albina

We're back...ready to go with LOTS of fresh air & sunshine...YES!

 The sun always shines at the Village Nursery!

As always, we are here to meet your gardening needs with the “hottest” houses full of so many happy, healthy, and blooming flowers! We were blessed with a very mild winter but there is still the promise of sunnier days at the “**Village Nursery, Where Quality Grows**”.

Houseplants will be available at our Open House – we have a nice selection this year and of course we still have our large Boston Ferns!

46 years & still going strong!

2023 was another good year at the Village Nursery, and for that we say, “Thanks” – it’s all about you! As always, we look forward to your return and hope you continue to bring your family and friends. Our #1 goal is to do better than before and to present to you an environment in which you and your friends will enjoy.

Drop in and enjoy the lush atmosphere! I wish you another successful year of gardening, good health, and joy in general...

Albina

Hours:

April 8th – May 4th open every day **8am - 5pm**

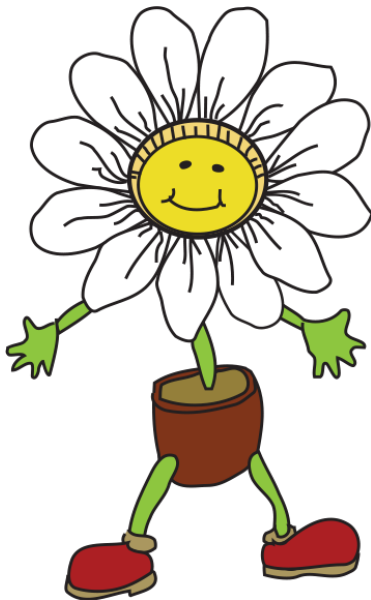
May 5th – June 30th open every day **8am - 6pm**

July 1st – October 5th open every day **8am - 5pm**

***We will be closed for the season on October 5th.**

Getting Here:

From Halifax, take exit 12 off Hwy #103. Turn left onto North St. to the 5th light. Turn right, go down the hill, cross the bridge then turn left heading down 331 south (this is the main street of Bridgewater). Go approx. 8km along the "river road"- the river on the left. Watch for our Dazee logo!



Christmas 2024? How about a Village Nursery gift certificate? Give us a call at 902-543-5649!

Contents

Annuals.....	2
Broadleaf Evergreens	3
Deciduous Shrubs	4
Evergreens	8
Fruit	9
Grasses & Ferns	10
Herbs.....	11
Perennials	13
Pots & Containers	23
Roses.....	24
Trees.....	25
Veggies	27
Vines.....	28
Water Plants.....	29

Annuals

Key Terms:

Wd – Well drained	LM – Leaf Mold
M – Moist	F – Fertile
W – Woodland	MT – Moisture Retentive
HR – Humus Rich	X – Excellent
DH – Deadhead	Gc – Ground Cover
S – Sandy	N – Neutral
PS – Part Shade*	A – Acid
P – Poor	Alk – Alkaline

*Part Shade: This usually means that the plant will require early morning sun opposed to noonday sun.



All heights are listed in cm.

BOLD = new this year!

Pricing: Nearly all packs contain 6 plants at \$3.99/pack. Errors in pricing can occur, all prices are final at checkout.

Variety	Series	Additional Information
Ageratum	Aloha	Sun-avg- 5-8" medium blue
Alyssum	different colors	Ps-avg- 4" nice for borders, trim back if it goes to seed
Amaranthus	Velvet Curtains	Sun-36"- Intense dark crimson flowers over burgundy foliage
Aster	different varieties	Sun-avg- 12-36", several different varieties, excellent for fall bloom
Begonias	Wax	Sun/Ps-avg- 6", red,white,coral,bi-color or pink flowers. Green or bronze leaves
Kale	Nagoya Red	Sun-avg- 8", nice for fall color
Celosia	different varieties	Sun-wd- 6-30" long lasting blooms, good dried, you'll be happy to have this in your garden
Cobaea	cup & saucer vine	sun-avg- 20', planted around our perennial log house every year, V.V. POPULAR- pots \$6.99
Coleus	different varieties	Ps-wd- 12", colorful foliage, excellent shade plant
Cosmos	different varieties	Sun-wd- 28-36" compact, semi-double blooms, very showy
Dahlia	mix, individual & pot varieties	Sun-avg- 12", mix colors, semi-double 2 1/2" blooms
Dianthus	Assorted Mix	10" fantastic summer blooms... very hardy mixture of colors
D'Miller	Silver Dust & Cirrus	Sun-wd- 8" silver-grey foliage, it may last in the garden, as is, several years
Dried	small assort.	sun-avg, statice,,chinese lantern, silver dollar, PUMPKIN on a STIK plus others
Gazania	different mixes	Sun-wd-8" flowers close at night, great for hot dry area....sold in 4/paks
Gypsophila	Gypsy Rose	Sun-avg- 8" small double light pink flowers, great filler & in beds
Heliotrope	Marine	Sun-wd- 24" purple, vanilla scented, attracts bees
Impatiens	many colors	the perfect bedding plant for shady & semi sun....self cleaning...prfect & colorful
Lavatera		
Lobelia	Upright & trailing	Ps-wd , blues, white, red, upright & trailing & mixes
M. Glory	mix,blue/red	Sun-M- 12', sold in large & large caged pots- heavenly blue the most popular \$8.99- \$24.99
Marigold	many varieties & colors	Sun-avg ,8-20" different shades & heights of yellows, oranges, reds, mixes & bi-colors
Marigold	Lulu/L.Giant	Ps-wd- 18" very colorful, fills in nice, makes a great super fantastic fall display of colors
Melampodium	Jackpot Gold	Saun-12"- Excellent in Hot & Humid climates. Self cleaning
Nasturium	various colors	Sun-dry- 12" ,good old fashioned Nasturiums, good for poor soil; Grandma's favourite
Nemophila	Baby Blue Eyes	Sun-Ps 12" lovely filler plant
Nictioiana	Mix	sun-Ps 24" lovely colors nice border plant
Pansy/Viola	faces & plain & frost hardy	Sun/Ps-wd- 6" beautiful happy faces
Petunia	dbl, single, wave	Sun-avg- 10" , many varieties color & habit. Waves 1/POT- \$3.99

Portulaca	different colors	Sun-wd- 6", moss rose, gorgeous blooms
Ricinus	Castor Oil Plant	Sun-wd- 8', very large & tropical in appearance- sold in individual pots \$6.99
Rudbeckia	Indian Summer	Sun-wd- 12-30" very popular , great show of color for fall, self seeds for next years flowers
Salvia	Assorted/farinacea	Sun/Ps-wd- 12-30" red, white, burgundy, bi-color & mix
Snaps	Assorted	Sun/Ps-avg-12"-3' , individual & mixed colors
Spanish Daisy	profusion	Sun/Ps-avg- 8", prostrate branches with delicate white daisy's, great filler...popular
Stocks	Mix	Sun/Ps-wd-12", highly recommended for bedding plants
Sunflower	different colors & heights	Sun-avg-1-6', makes a great fall show of color
Snow Pea	Mix	Sun-HR-6', 6-7" large blooms per stem Sold in 6" pots with trellis \$8.99
Thunbergia	Blk Eyed Susan Vine	Sun-wd-vine-great for hanging baskets & containers, mixed colors - sold in 4/paks
Torenia	Wishbone Flower	Sun/Ps-wd-8", looks like a miniature pansy
Verbena	Assorted incl BONARIENSIS	Sun-wd- 10", very pretty, mixed , Bonariensis(20") lilac color- a must! (4/pk) -self seeding for next year
Zinnia	different varieties	Sun-wd-1-30", zinnias like it very HOT, dry & sunny

Helpful Hints:

Deadhead spent blooms for a cleaner look & to keep new blooms arriving.
Amend the garden soil for extra rewards!

Broadleaf Evergreens

Key Terms:

Wd – Well drained	LM – Leaf Mold
M – Moist	F – Fertile
W – Woodland	MT – Moisture Retentive
HR – Humus Rich	X – Excellent
DH – Deadhead	Gc – Ground Cover
S – Sandy	N – Neutral
PS – Part Shade*	A – Acid
FS – Full Sun	^ - Requires winter protection
P – Poor	Alk – Alkaline

*Part Shade: This usually means that the plant will require early morning sun opposed to noonday sun.

BOLD = new this year!

Errors in pricing can occur, all prices are final at checkout.

Species/Variety	Culture	Price
Andromeda p Blue Ice	A/wd-Nice Blue foliage& clusters of pink flowers in the spring	29.99/ 1g
Buxus Green Gem	Ps/Wd/F/sun may cause scorch- 3'- a superior hybrid Boxwood selection that grows into a cute, neat, tidy, uniform little ball	29.99/1g
Buxus Green Mountain	Ps/Wd/F/sun may cause scorch 5' vigorous,natural cone shaped, bright green color all season & winter	49.99/ 2g
Buxus Green Velvet	Ps/Wd/F/sun may cause scorch-4 x 4'- protect from strong wind; grows slow	29.99/1g
Euonymus Canada Gold	F sun-ps/wd/-3 x 4'wide-bright golden yellow splashed with light green	\$49.99
Euonymus Purple Creeper	Full Sun-Ps/wd- 20' fast growing, good for erosion control dark green leaves, up to 2" long turning , reddish purple in fall	\$19.99
Euonymus Emerald Gaety	Full Sun-Ps/wd-5 x 5', green & white variegated foliage with some pink tinge	29.99/1g
Hedera Thorndale	Ps/wd-one of the best choices for a fast-growing and carefree screen or GC.	\$29.99
Ilex com Blue Prince/Princess	Sun-ps/M-6'x5'w- M&F in one pot to grow as a single plant..DO NOT SEPARATE	46.99/ 1g

Ilex m Blue Prince	Sun-ps/M-15'- an excellent pollenizer for female Hollies..Very hardy	56.99 /2g
Ilex m Princess	Sun-ps/M-15' showy bright red berries... good companion to Blue Prince or any variety male Holly	56.99 /2g
Pieris Manchurian Fire	sun-ps/M/V WD/HR/A/prune & fert imm after flwr-	29.99/1g
Rhodo Nova Zembla	noon shde/A/M/wd/prun & fert after flowering-6x5'w- vigorous, brilliant red flowers	46.99/ 1g
Rhodo Polarnacht	noon shde/A/M/wd/prun & fert after flowering- 3h x 5'w- stringling dark purple flowers with dark blotch & wavy margin	69.99 /2g
Yucca Color Guard	sun/medM/wd-3h x 2'w- rich green leaves with yellow stripe	56.99/ 1g

Helpful Hints:

Some of these plants require **burlap protection** in the winter.

Always use proper Broadleaf food and only early in the season.

Rhoddo/Azalea: Do not use any miticides- never water over the top of leaves; Fertilize with proper Rhoddo food, NOT Aluminun Sulphate. Fertilize in the spring and after flowering in July.

Leaf chewing Beetles: Use Diatomaceous Earth or Horticultural Oil; mulch to provide sufficient moisture.

Leaves turn black and stem starts getting black: Botrytis, usually caused by roots not taking up water each time you water it makes the problem worse. Usually caused by really wet winters & then a period of really hot weather. Cut back beyond the black. Supply good air circulation & practice good sanitation...deadhead decaying flowers.

Holly:

- Female hollies have a 'bump in the middle of the flower-male hollies have an indent in the middle of the flower.
- For the best results use proper fertilizer for Hollies.
- One male Holly will fertilize 5-6 females if stems are not black.
- Give 2 feedings [no more] of All Purpose Miracle Gro This is good advice for all dead-looking trees/shrubs.

Every 3 years the hollies will shed the older leaves. If, for whatever reason hollies completely de-foliate, they will usually return. Using proper fertilizer is important to the nutrient supply for the plant. Usually sold in small size packages, Aluminum Sulphate is NOT a fertilizer, it is for acidifying the soil.

Deciduous Shrubs

Key Terms:

DT – Drought tolerant	SD – Sharply Drained
Wd – Well drained	LM – Leaf Mold
M – Moist	F – Fertile
W – Woodland	MT – Moisture Retentive
HR – Humus Rich	X – Excellent
DH – Deadhead	Gc – Ground Cover
S – Sandy	N – Neutral
PS – Part Shade*	A – Acid
FS – Full Sun	^ - Requires winter protection
P – Poor	Alk – Alkaline
MM - Medium	VV – Very Very
D - Dry	AM – Air Movement

*Part Shade: This usually means that the plant will require early morning sun opposed to noonday sun.

ARBC – Add small rocks over top of roots before covering to keep plants from flopping over.

Bold = new this year!

Stay up to date with sales, news, and events by signing up for our newsletter at villagenursery.ca
& Follow us on [Facebook](#) & [Instagram](#)

Sizes refers to the size at maturity.

Errors in pricing can occur. All prices are final at checkout.

Variety	Garden Use	Price
Amelanchier a Saskatoon	S-Ps/M/W-up to 20'; Serviceberry, White -the ripe fruit is a small berry-like pome; dark, reddish purple to nearly black.	\$ 49.99
Amur River Privet	sun/Wd-dense growing hedging, upright olive green foliage & insignificant flowers, trim 2-3 times a year \$15.99 or	10/13.99
Artemesia Old Man	sun/wd-3'-an erect sub-shrub with very finely divided, pleasantly aromatic grey-green leaves	19.99 /2g
Azalea Golden Lights	sun-ps/hr/A/wd--3'- Covered in golden-yellow blooms in spring. An excellent spring display of color	\$ 69.99
Azalea Mandarin Lights	sun-ps/hr/A/wd--3'- Covered in rich orange blooms in spring. Probably the most striking flowering shrubs	\$ 69.99
Azalea Northern Hi-Lights	sun-ps/hr/wd/A-3' stunning clusters of lightly-scented pink trumpet-shaped flowers with rose overtones at the ends of the branches	\$ 69.99
Azalea Rosy Lights	sun-ps/hr/A/wd-. Prolific bloomer of deep dark rosy pink blooms	39.99 /1g
Berberis t Sunsation	sun /avg/wd/prn aft flwr- slow growing; 3'- small yellow leaves turning orange in the fall	\$ 49.99
Berberis t Rose Glow	sun /avg/wd/prn aft flwr - 5' x 4'w, small, deciduous shrub with an eye-catching foliage of deep rose-red leaves mottled with pink and white	\$ 49.99
Berberis t Royal Burgundy	sun /avg/wd/prn aft flwr- 2' x 3'-will not self seed; small leaves are purple-red color all season; pale yellow flowers	\$ 49.99
Buddlei Pugsters Blue	Sun/wd/WP Large, fragrant, blue flower on a tidy, compact plant. CTS r color well into fall. A prolific bloomer ...Butterflies	36.99 /2g
Buddlei Wisteria Lane	Sun/wd/ protect from winter winds-4'- weeping habit with long, majestic rich-violet flower spikes throughout summer.	36.99 /2g
Buddlei Miss Molly	Sun/wd/ protect from winter wind 5 x5' fragrant flowers are the closest to red & appear for months every summer & no DH	\$ 49.99
Chaenomeles rubra	sun-ps/wd-avg4 x 4'w-early; clusters of deep crimson flowers; Quince Small fragrant greenish yellow fruit in the fall	59.99 /3g
Clethra a Vanilla Spice	Sun-Ps-6' ; compact spikes of X fragrant white flowers slow growing; blooms mid- late summer pollinators	\$ 49.99
Cornus Kousa Satomi	sun-ps/wd/mod M-25'- 4 pointed petal flowers are white ; extremely attractive; Red berries follow flowers	\$299.99
Cornus s Red Osier	sun-ps/wd/mod M- 6-9', prune hard in spring; fast growing, fall berries, red stems & variegated foliage	\$ 39.99
Cotinus Royal Purple Smokebush	sun-ps/A/prune in spring-10', foliage dark purple,pink flowers looks like smoke-this is the best "smoke' variety	\$ 49.99
Cotinus Winecraft Gold	sun-ps/A/prune in spring- 5'-waxy leaves emerge orange maturing to a cheerful chartreuse	\$ 49.99
Cotoneaster a Peking	sun-ps/A/prune in spring-5-7'; useful as a hedge; small pink 'appleblossum' flowers; small balck berries in fall; beneficials	\$ 49.99
Deutzia l Compacta	Sun best/wd/m/hr-4 x 4' -white trumpet flowers blooms in spring along the branches;	\$ 49.99
Deutzia Yuki Cherry Blossoms	Sun best/wd/m/hr up to 6'-Incredible clusters of small cupped mockorange-like pink flowers laced with white;	\$ 49.99
Deutzia Yuki Snowflake	sun-ps- 2'-Hundreds of elegant star-shaped fragrant blossoms in spring,	\$ 49.99
Diervilla Nightglow	sun-ps/avy soil -3 x 3' intense yellow flowers, in early spring, with Dusky red foliage	59.99 /2g
Diervilla r Kodiak Red	sun-ps/avy soil3 x3'-yellow sprig flowers; the fall color is a warm red with hints of orange	\$ 49.99
Euonymus compactus	sun/wd-6' VV hardy; green in summer turning brilliant fire-red fall color is also displayed earlier than others.	36.99 /2g
Exordia Lotus Moon	Sun-ps-6'h x 4'w-spring blooming with long strings of white flowers resembling strings of Pearls	51.99 /2g
Forsythia Northern Gold	Sun/wd-6' prune right after flowering. If you don't prune it will go wild & stop blooming, eventually	36.99 /2g
Forsythia Show Off	sun-wd- 6', compact, blooms up the whole stem; prune immediately after flowering	49.99 /2g
Hamamelis virginiana	S-Ps/W- 15' Common Witch Hazel sweetly scented pale yellow slightly twisted, rope-like flowers in fall or early winter	59.99 /3g
Hibiscus s Aphrodite	sun/HR/wd/neut-alk-8'-Large single crisp clean white flowers appear in late summer	\$ 59.99
Hibiscus s Bali	sun/HR/wd/neut-alk 8' Semi-double pure white flowers 3-4" are highlighted with a bold purple-red center	\$ 39.99

Hibiscus s Blue Chiffon	sun/HR/wd/neut-alk-6' the flowers are large & showy with white petals & blue centres	\$ 59.99
Hibiscus s Collie Mullens	sun/HR/wd/8'-blooms beautiful double, light purple blossoms on branches with bright green toothy foliage. Blooms are typically 4-6"	\$ 59.99
Hibiscus s Hamabo	sun/HR/wd/neut-alk 8' - blush-pink flowers 12cm in width, with a conspicuous red blotch at the base of each petal	\$ 46.99
Hibiscus s Lucy	sun/HR/wd/neut-alk-8-bright reddish-pink flowers over a long period, usually from early summer into mid-fall. Slow growth rate	\$ 46.99
Hibiscus s Pink Chiffon	sun/HR/wd/neut-alk-8' colorful large soft, clear pink disc shaped flowers with a lacy center	\$ 59.99
Hibiscus s White Chiffon	sun/HR/wd/ 8' prune in late winter back to 2-3 buds large double white flowers	\$ 59.99
Hydrangea a Annabelle	sun/HR/wd/8' stunning white flowers over 10" in diameter;blooms every year even after harsh pruning	\$ 46.99
Hydrangea a Incrediball	sun/HR/wd/ 5 x 5' strong stems of white flowers rounded that do not flop over	56.99 /2g
Hydrangea m Cherry-Go-Round	sun-ps/M/HR / 3 x 3'- CTS; deep red mophead flowers	\$ 49.99
Hydrangea m Eclipse	sun-ps/M/HR / 4' - deep dark purple, almost black, foliage with bright red & pink flowers with white centres	\$ 49.99
Hydrangea m ES Bloomstruck	sun-ps/M/HR / 4' x 5'wide large Blue flowers DO Not add Lime if you want Blue flowers	\$ 59.99
Hydrangea m LD Sky View	sun-ps/M/HR /prune e spring/ CTS May- September;flowers change from Rose, Purple,Maroon with green highlights	\$ 59.99
Hydrangea m ES Summer Crush	sun-ps/M/HR /prune e spring/blooms old & NU wood-3'-Huge blooms repeats;blooms old & nu wood; raspberry-red-	\$ 59.99
Hydrangea m L D Blue Jangles	sun-ps/M/HR /2'-blooms old & nu wood, compact; reblooming hydrangea .Large, full flower heads blue in acid soils	\$ 59.99
Hydrangea p Fire Light	sun-ps/M/HR /prune e spring 6' hugh flowers heads from creamy White to Raspberry Pink	\$ 59.99
Hydrangea m Pop Star	sun-ps/M/HR 3 x3' Electric Blue Hydrangea, excellent rebloomer	\$ 39.99
Hydrangea m ES the Original	sun-ps/prune e spring/blooms old & NU wood- 6' Very large flowers for Blue flowers DO NOT add Lime	\$ 59.99
Hydrangea p Moonrock	sun-ps/M/HR /prune & fertilize e spring 6- White panicles of flowers on sturdy stems	\$ 51.99
Hydrangea p Pee Gee	sun-ps/M/HR-8' - blooms form large cone-shaped clusters (panicles) of white flowers that develop a pink or purple tint over time.	\$ 39.99
Hydrangea p Vanilla Strawberry	sun-ps/M/HR -6'-white panicles turn to raspberry pink over the summer; a real SHOW STOPPER	\$ 49.99
Hydrangea s TS AH HA Mountain	sun-ps/M/HR /prune & fertilize e sprig 3 x3'- reblooming Lacecap bright pink or purple depending on soil;add Lime for Pink	\$ 59.99
Kolkwitza amabalis	Sun/wd/m-8'-Beautybush-multi stemmed stunning pink trumpet-shaped flowers with yellow throats along the branches in late spring. .	49.99 /3g
Magnolia Leonard Messil	Sun-ps/Wd/ 15-20'- 4" purple fragrant buds open to a deep pink with a white tinge	\$299.99
Magnolia stella Royal Star	Sun-ps/Wd/M-15'--slow growing slightly fragrant 3-4" star-shaped WHITE flowers; flowers open before leaves	\$229.99
Magnolia Susan'	Sun-ps/Wd/M-10' Little Girls series cross between waterlily & liliiflora -5" twisted petals,fuchsia color..slow growing & very floriferous/fragrant	\$166.99
Philedalphus Snowbelle	sun-Ps/wd-4'-ull, dark green leaves &sprays of double, white, very fragrant, bowl-shaped blooms 6cm across in E summer	\$ 39.99
Philedalphus Snow Dwarf	sun-Ps/wd- 3 x 3' showy double fragrant white flowers; spring blooming	36.99 /2g
Potentila Bella Sol	Sun/Wd/M-prune hard after flowering 3 x 3'- Sunset orange blooms from the top to bottom;	46.99 /2g
Potentila f Abbotswood	sun/wd-3 x 3'- masses of large white flowers blooming June to September	\$ 39.99
Potentila f Mango Tango	sun/wd-3' x 3'-Bright, rich orange shades paint a picture you simply can't live without	\$ 39.99
Potentila f Happy Face Hearts	sun/wd- 3' rose-like flowers in shades of orange and red. Prolific bloomer over a long season from summer to fall.	\$ 49.99
Potentila Lemon Meringue	sun/wd-30"-bushy deciduous shrub of upright habit boasting masses of clear pink flowers from late spring to the first frosts.	\$ 46.99
Prunus cistina Purpleleaf Sandcherry	Sun/wd-up to 10'; can be a small tree. reddish purple foliage that retains good color throughout the summer.	41.99 /2g
Prunus t Multiplex F.Almond	sun/wd-15'-often as a small tree. Pink, five-petaled flowers in spring.no fruit	49.99 /3g
Rubus o Flowering Raspberry	sun-ps/wd- 6'h x 6-12'w good for erosion colorful purple flowering & foliage orange in the Fall Maple shaped leaves	\$ 39.99
Salix discolor	SUN/M/10'- grey leaves, grey under sides...pussy willows emerge before the leaves	19.99 /1g

Salix int Hakuro Nishiki	Sun/M-12' pink stems with pink & white foliage; color will stay better if pruned back regularly	\$ 39.99
Sambucus Elder Black Tower	sun-ps/wd- burgundy colored foliage on this upright shrub Softly cut edges Bright pink flowers, blackish red berries	49.99 /2g
Sambucus Lemony Yellow Lace	sun-ps/wd-5'-white spring flowers; finely dissected foliage in a cheery gold color; lemon color into Fall; Deer resist;	56.99 /2g
Spirea Graciosa garland	sun-ps/M/wd/ prune immediately after flowering-3.5'- clusters of white flowers along the arching branches;vase shaped; Garland Flower	29.99 /1g
Spirea Dbl Play Blue Kazoo	S-PS/wd- 3 x 3' foliage changes color from pinks to green through the summer with large clusters of large white flowers	\$ 49.99
Spirea Dbl Play Doozie	S-PS/wd- 3 x 3' foliage changes color from pinks to green through the summer with large clusters of large white flowers	\$ 46.99
Spirea DP Big Bang	sun-ps/M/wd/ prune immediately after flowering 3 x 3'- glowing orange to yellow leaves with pink flowers	\$ 49.99
Spirea Little Princess	sun-ps/M/wd-3' Dainty clusters of rose pink blooms create a pleasing contrast with the low-growing, mint green foliage	\$ 39.99
Spirea Vanhouttei	sun-ps/M/wd-8'- arching branches that give the plant a form reminiscent of a fountain.covered with tiny white flowers	\$ 39.99
Symphoricarpos Pinky Promise	sun-ps/wd- 3 x 3' large plump gumball-like pink berries with minty green foliage	56.99 /2g
Symphoricarpus Albus	sun-ps/wd 3-6' huge ornamental large white waxy berries	\$ 49.99
Syringa Beauty of Moscow	Sun/Hr/wd/Lime/prune immediately after flowering. The large, gorgeous, white double flowers with a tinge of pink...	59.99 /3g
Syringa Charles Joly	Sun/Hr/wd/Lime/prune imm after flowering.-8'upright, with showy panicles packed with amazingly fragrant, magenta, double flowers.	49.99-69.99
Syringa Bloomerang	Sun/Hr/wd/Lime/prune immediately after flowering small reblooming dwarf dark purple	\$ 51.99
Syringa m Palibin	Sun/Hr/wd/Lime/prune immediately after flowering;7'-A dwarf, fragrant pale purple flowers	\$ 69.99
Syringa p Miss Kim	Sun/Hr/wd/Lime/prune immediately after flowering;A dwarf, compact lilac with pale purple flower buds open lavender blue.	56.99 /2g
Syringa vulgaris	Sun/Hr/wd/Lime/prune immediately after flowering-8'-loosely open panicles packed with fragrant, single, deep violet flowers in late spring.	49.99 /2g
Viburnum o Roseum E Cranberry	sun-ps/wd/prune aft flwr 12'-rounded habit, with a profusion of large, rounded clusters, 3 in. , white flowers in late spring.	\$ 59.99
Viburnum pl Mariesii	sun-ps/wd/prune afr flwr- up to 12' large lace cap white flowers; horizontal branching DBL File Viburnum	39.99 /2g
Viburnum t Red Wing[A Cranberry	sun-ps/wd/prune after flowering attractive foliage color all season, White fowers & Red berries all fall	\$ 46.99
Weigela Crimson Kiss	Full sun/M/F/prune after flowering-3 x 3' Lipstick red blooms in spring & re blooms;	56.99 /2g
Weigela f My Monet	Full sun/M/F/prune after flowering- variegated foliage & pink flowers in spring; attractive foliage all season	56.99 /2g
Weigela f Red Prince	sun-ps/wd/M/prune after flowering- 6' bright red tublar shaped flowers in early summer & sometimes reblooms	\$ 39.99
Weigela Sonia Bloom Pink	sun-ps/wd/prune after flowering-4'- a striking deciduous shrub noted for its long blooming season. From spring until the first frost	59.99 /2g
Weigela Spilled Wine	sun-ps/wd/M/prune after flowering-3 x 3' bright pink flowers & purple foliage	56.99 /2g
Weigela Strobe	sun-ps/wd/M/prune after flowering-3 x 3"-from spring -autumn, bright pink flowers against green & bronze,then orange, then crimson red foliage.	56.99 /2g

Helpful Hints:

No pruning or fertilizer (compost is fertilizer too) to trees or shrubs after August 1st as it promotes new growth which will freeze off in the winter resulting in winter kill of the plant. Water heavily until freeze, especially on newly planted material or in a year suffering from drought.

When planting trees/shrubs it is best to not use any fertilizer in the hole, except Bonemeal, which should be worked in with the soil & peat moss, & humus should be worked well into the soil, around the roots, as well. Allow lots of room in the hole for the roots to spread out. If the root is pot bound, make several long slashes from top to bottom of the root allowing the roots to escape.

Water the hole well. It is very important to have the water in the hole where the roots are trying to get established. Cover the roots with the soil you removed from the hole & tap lightly working around the root ball & fill the hole with soil. Create a 'basin' effect to catch the water. Water well once a week even in the rain.

Commonly Asked Questions:

Q: I had several small blooms on my hydrangeas last year, so this year I have fertilized every 10 days until I saw blooms starting to develop. What else should I be doing to get big blooms?

A: The first rule of thumb is to NOT over-fertilize your plants. We suggest one application of granular fertilizer in spring or early summer, and then follow package instructions afterwards. If you over-fertilize, it can burn the root system of your hydrangeas and actually inhibit bloom production.

Q: I pruned my hydrangeas back after an early frost and now I am not seeing blooms. Why is that?

A: How to prune hydrangeas is a great question. If you prune your hydrangeas back to the base, that is where your new blooms will grow from! It will take some time for the new growth to develop and produce blooms. Be patient and look for the green growth coming up from the base of the plants.

Blooming Guide for Hydrangeas:

Hydrangea arborescens: Blooms on new wood, prune in late winter or early spring.

Hydrangea macrophylla: Blooms on old wood, do not prune. Remove only spent flowers and dead, damaged or unsightly wood.

Hydrangea paniculata: Blooms on new wood, prune in late winter or early spring.

Hydrangea quercifolia: Blooms on old wood, do not prune. Remove only spent flowers and dead, damaged or unsightly wood.

Hydrangea serrata: Blooms on old wood, do not prune.

Evergreens

Key Terms:

Wd – Well drained	LM – Leaf Mold
M – Moist	F – Fertile
W – Woodland	MT – Moisture Retentive
HR – Humus Rich	X – Excellent
DH – Deadhead	Gc – Ground Cover
S – Sandy	N – Neutral
PS – Part Shade*	A – Acid
FS – Full Sun	^ - Requires winter protection
P – Poor	Alk – Alkaline
MM - Medium	VV – Very Very

*Part Shade: This usually means that the plant will require early morning sun opposed to noonday sun.

Bold = new this year!

Errors in pricing can occur. All prices are at checkout are final.

Size mentioned is the size at maturity.

Species	Culture	Price
Chamaecyparis n Pendula	sun/wdPs /slightly A-33'x10'w,X specimen tree,Pyramidal;pendulous tips Flat sprays with tip upward	199.99 /7g
Juniper h Blue Chip	sun/wd/modM up to 12" h x 6' wide sprawling silvery blue evergreen	66.99 /3g
Juniper h Blue Rug Wiltoni	sun/wd up to 6" x 8', fast grower	56.99 /2g
Juniper v Blue Arrow	sun/wd/modM-15' x 2'w- fast growing, dense branching holding bright, blue-green foliage and silvery berries	69.99 /2g

Larix pendula	SN-wd/avg-up to 30' x 20'w-the new shoots are pink to reddish pink; Larch loses it's needles each fall & buds out early spring	\$269.99
Picea p Blue GlaucaThe Blues	sun/wd modM-6' x 6' weeping, slow growing,bright blue needles	159.99 /3g
Taxus m Hicksii	sun-18'- dense shrub of narrowly columnar habit when young, becoming wider with age; does well with pruning	66.99 /2g
Thuja Danika Globe Eastern	Sun-ps/ average maintenance no pruning required 2 x 2', dense globe shaped, bright green	49.99 /2g
Thuja o Northern Spire	Sun-ps/avg-up to 16' compact Western Cedar, dark green glossy foliage turning red in fall & winter	169.99/7g
Picea a Little Gem	sun/wd modM-in 10 years this shrub will be of growth will measure 1' x 18"; X Rock Garden specimen; Green	\$99.99

Fruit

Bold = new this year!

Errors in pricing can occur. All prices are final at checkout.

Fruit	Description	Price
Kiwi	Actinidia-Both male & female are required for fruit production.Twining vine/prune late winter. SUN-F/ WD soil with shelter from strong winds	
	Issai self fruitful the smooth skinned green fruit are the size of grapes and taste like a sweet tropical kiwi without the fuzzy skin	\$36.99
Asparagus	Asparagus -Plant roots or seed in early spring. Important to keep bed free of weeds..	5/12.99
	Do Not cut fruit first year & very little the second year	
Equinox	Equinox- known for its high yield and quality, including long spears and a tight tip.	
Blackberry	Blackberries Full Sun, well drained Moist humus rich soil; self pollinating	\$29.99
	Chester- thornless; heavy crop of very large, jet black, round and very sweet blackberries in mid-late summer.	
	Hardy Black- Thornless, bears clusters of large, sweet and juicy fruits on spiny canes	
Blueberries	Min.2 varieties should be plant for best production, Acidic soil, can be maintained by using old sawdust/pine needles, never use lime.	\$26.99
	Full sun. Prune late winter & fertilize with 10-10-10. Keep 'witches broom out of bushes. It looks like a fast growing 'broom' & snaps off easily	
	Bluegold- clusters of edible, medium-sized, blue fruits in summer Bluecrop-5 x 5' -high yields, sweet & juicy mid season;Polaris-5'- very large berry that is firm, light blue and has an excellent flavour.	
	Duke-5-7' -ripens early; firm mildly tart berry; Elliot- tangy berries in the Fall	
	Northland-excellent for jams and baking because of their high sugar content. Medium size berries are of high flavor similar to wild blueberries	
Heartnut	Heartnut- a cross between a Japanese heartnut and a butternut; produces fruit in z3;high in Omega fatty acids	\$29.99
Horseradish	Horseradish Sun, keep well water. A very invasive, plant where can be controlled	\$12.99
Strawberry	Mulch in spring with well rotted real manure, Sun/M/Wd sheltered location-	10/12.99
	Mira-Mulch plants with shavings; use 20-20-20 to transplant , keep runner in the rows & remove blossom the 1st year	
	Eversweet-The plants will produce from spring straight through the fall, even in the hottest parts of summer. High yields	
Raspberry	Nova Red-Sun, plant 3' apart. Cut back to 1' when planting. Fruit on old wood	5/\$15.99
Rhubarb	Rhubarb Strawberry-Sun, grows in most any soils, but is a heavy feeder. Fertilize spring with rotted manure	\$19.99
	Strawberry Red-retains red color when cooked..leaves are toxic; reliable	
	Canada Red - short crown, producing thick, angular stems and enormous, smooth, heart-shaped leaves	
Goose	Ribes Grow in Full Sun/wd/plenty of composted 'REAL' manure; prune regularly for best production	\$29.99
Goose	Ribes Hinnonmaki Red - outstanding flavor & high yields	
Ribes	Ribes Hinnonmaki Yellow-improved variety for the home orchard; sweet flesh and a tangy outer skin,	\$29.99
Ribies	Ribies Currant Lake Red self pollinating- sweet, good source of glucose, fructose and sucrose but also rather tart.	
	Ribies Current Black Down self pollinating-Late.Large, jet-black berries that are juicy and flavorful. X in jams, jellies and juice.	\$29.99
Grape	Vitis-Easy to grow on any sunny wall or fence. Prune mid-winter/Wd/Hr/Neut-alk/Sun -#1 size	

	Belchas White; very productive for table & wine.fall; Trollhaugen-Blue seedless table grape, sweet and mild Concord-like flavor.	\$29.99
	Somerset- red seedless; full & delightful flavor;Briana-greenish gold; Perfect as a juice grape or as a light, semi-sweet table wine.E fall	
	Marchel Foch wines ranging from light red wine to dark "inky" purple colour ; Frontenac Gris-white wine	
Osceola	-white wine;X table Grape; Frontenac-An excellent hardy blue wine grape. Very widely planted in Quebec vineyards.	

Helpful Hints:

Fruit trees grow best in full sun with well-drained soil that has a sandy and loamy texture.

Deep soil is needed to support their deep root systems!

Use 1/2 lb 10-10-10 fertilizer for every year of the tree, up to 5 lbs. [MAX], on the ‘drip line’-or you can use aged ‘real manure’ & on drip line in spring.

All fruit trees need at least 6 hours of sun each day through the summer & fertile soil with good drainage.

Grasses & Ferns

Key Terms:

Wd – Well drained	LM – Leaf Mold
M – Moist	F – Fertile
W – Woodland	MT – Moisture Retentive
HR – Humus Rich	X – Excellent
DH – Deadhead	Gc – Ground Cover
S – Sandy	N – Neutral
PS – Part Shade*	A – Acid
FS – Full Sun	^ - Requires winter protection
P – Poor	Alk – Alkaline

*Part Shade: This usually means that the plant will require early morning sun opposed to noonday sun.

Bold = new this year!

Sizes shown are size at maturity.

Errors in pricing can occur. All prices are at checkout are final.

grass	Andropogan g Blackhawks-Sun/medM/wd -5'-near black foliage, upright,finger-like flower clustersresembling 'Turkey Feet'; requires very little care	\$19.99
fern	Athyrium Lady in Red- Ps-M/wd - 30"-slowly-spreading, ruby to garnet red stems bearing lacy, light green fronds.	\$19.99
fern	Athyrium n. pictum Silver Falls-Japanese Painted Fern 12-18", clump forming Silver fronds, long lasting color; purple red midrif; slow growing	\$16.99
grass	Calamagrotis a Karl Forrester-Sun/ps/F/Dry/Soil/MM M/wd/3-5'- a cool season grass that grows most rapidly in the spring season with early blooms. Noninvasive	\$16.99
grass	Hakonechloa m Aureola-sun-shade/M- 2' x 2' a very tough long lived yellow & lime variegated grass; dense spreadinggraceful cascade mounds	\$16.99
grass	Hierochloe odorata (Sweet Grass) - M PS-/R/W -1-3' medicinal, use for Tea, to heal chapping & windburn, sacred medicines	\$12.99
fern	Matteuccia s Ostrich- Pshade-/wd/M-6'-Ostrich Fern;clump forming upward arching fronds;Fiddleheads;cinnamon fronds	\$19.99
grass	Miscanthus s Fire Dragon -7' upright grass into intense red and orange hues. Silvery plumes dance above the fiery foliage like smoke.	\$19.99
grass	Miscanthus s Huron Sunrise- Sun/M/F -6' trim to 4" above ground early spring large, burgundy plumes from late summer into fall. Fall/winter almond color	\$12.99
grass	Miscanthus s Little Zebra- Sun/M/F- 4'- trim back to 4" above ground early spring known for it's horizontal banding foliage	\$12.99

grass	Miscanthus s Oktoberfest- Sun/M/F 4.5' before bloom trim to 4" above ground early spring-the foliage is deep purple and red highlights flowers burgundy-copper	\$16.99
grass	Miscanthus s Purpurascns- Sun/M/F - trim to 4" above ground early spring; clump of dark-green leaves, flame-orange & bronze in the fall blooms soft pink	\$16.99
grass	Miscanthus s Siberfeder- Sun/M/F 8` - rim back to 4" above ground early spring Large, feathery plumes that emerge a shimmering pinkish-silver in late summer	\$12.99
grass	Miscanthus x Giganthius -12' trim back to 4" above ground early spring fluffy, fan-like plumes Foliage turns a deep burnt orange	\$12.99
grass	Muhlenburgin Undaunted-Muhly Grass-30"-blooms late with nice pink heads, may self-seed	\$12.99
grass	Papyrus King/Medium/Baby Tut -A- Sun-ps/M/Hr-lovely garden accent, aquatic great heads, shelter from wind one season-4' & taller-Excellent	\$9.99
grass	Pennisetum a Hameln-2-3'h- transforms ordinary edges into lush borders. It works well as filler for large areas or as a specimen in small patios & in containers	\$12.99
grass	Pennisetum Purple Fountain -A- Sun-ps/M/Hr-3'-the foliage is topped with slender feathery pinkish flowers plumes, up to 15 in. long Excellent	\$9.99
grass	Pennisetum Vertigo -A- Sun-ps/M/Hr-Black Fountain Grass-This is a big grass—it will grow up over your head if you water it enough-Excellent	\$9.99

Helpful Hints:

Most grasses are deer resistant! Miscanthus is a warm weather growing plant, it needs sun & water in dry conditions.

A fern is a member of a group of vascular plants that reproduce via spores and have neither seeds nor flowers. Keep newly planted ferns well-watered for the first growing season while they are becoming established. Plant them in well-prepared soil in a protected area. Never let plants growing in 4-inch or smaller pots dry out until they reach a mature size and are well established.

Ornamental Grasses boast a huge variety of graceful, low-maintenance grasses that add a wealth of texture and movement to the landscape, in colors ranging from soft pink to bright green or intense purple. Some hardy ornamental grasses are suitable for the coldest climates, while others tolerate intense summer heat or salty air and windy coastal conditions.

Herbs

Key Terms:

Wd – Well drained	LM – Leaf Mold
M – Moist	F – Fertile
W – Woodland	MT – Moisture Retentive
HR – Humus Rich	X – Excellent
DH – Deadhead	Gc – Ground Cover
S – Sandy	N – Neutral
PS – Part Shade*	A – Acid
FS – Full Sun	^ - Requires winter protection
P – Poor	Alk – Alkaline

*Part Shade: This usually means that the plant will require early morning sun opposed to noonday sun.

Bold = new this year!

Pricing: 1 pack (4 plants) = \$3.99

Single pots = \$2.99-4.99

For various reasons, some herbs may not be available, or additional herbs may be available beyond what is listed here.

Errors in pricing can occur. All prices are at checkout are final.

Common/Latin	Cultivation	Garden Use
Anise	Wd/Hr/M	used as a flavoring agent. It has a sweet, aromatic taste that resembles the taste of black licorice

Basil [several varieties]	Wd/Hr/M	genovese the best for pesto; Nufar, Red Rubin; Siam Queen, Spicy,Thai; & Regular sweet Basil
Basil Emerald Towers	Wd/Hr/M	3'-Well-branched with short internodes makes a beautiful, towering plant with huge harvest potential that stays tidy for many uses
Basil Amethyst	Wd/Hr/M	same taste as regular sweet Basil. Use it fresh to retain the beautiful color.
Basil Aristotle	Wd/Hr/M	same peppery flavor as other Basils; green, small leaves
Basil Crimson King	Wd/Hr/M	Purple leaf Genovese with great vigor
Basil Reuter's Devotion	Wd/Hr/M	a sweet Genovese basil with upright habit & strong fragrance. Green leaves
Basil Trybasil	Wd/Hr/M	Try A Trio' Genovese, Serrated Green & dark Red Selections all in one plug
Borage Officinalis	Sun/wd/Hr	chop leaves & flowers to salad & drinks/tea & honey & lemon.good companion plant for tomatoes, squash & strawberries
Cat Grass	Sun/wd/Hr	your cats will love you for this treat
Chamomile German	pH6.7/Wd/S	best for tea, the most prolific producer of flowers
Chamomile Roman	pH6.7/Wd/S	traditional ground cover in english gardens & pathways where it is cut like grass
Chervil	Sun/wd/Hr	used in soups & salads, can improve every dish in which parsley is used, great for garnish
Chives Regular/Garlic	Sun/wd/Hr	uses too numerous to mention
Cilantro-Coriander	Sun/wd/Hr	chinese parsley, grown for it's seed, add to soup, stews or exotic dishes & Vietnamese
Curry plant	Sun/wd/Hr	brush against the plant for a curry fragrance, curry great in potato salad too
Dill Regular	Sun/wd/Hr	great in potato & other salads & of course pickles
Fennel Sweet Orion	Sun/wd/Hr	crisp sweet licorice-flavored bulb, but the fonds are used for garnish, and stalks are great in a broth.
Feverfew	Sun/wd/Hr	believed to help reduce migraine attacks, Sometimes called Medieval Aspirin
Horehound	Sun/wd/Hr	used for digestion problems including loss of appetite, indigestion, bloating, gas, diarrhea, constipation, and liver etc
Lemon Balm	Wd/pH7.0-	attracts bees, used in tea to soothe nerves
Lemon Balm Orange (Melissa)	Wd/pH7.0-	attracts bees, used in tea to soothe nerves with a delicious Orange flavor
Lemon Grass	Sun	A common ingredient in Thai and Vietnamese cooking, among other Asian cuisines, it has a lemon scent and tartness
Lovage	Sun/wd/Hr	leaves can be picked fresh for salads, celery flavor, add to soups for a fascinating flavor
Marjoram Sweet-A	Sun/wd/Hr	used in many Italian & greek dishes, a must in every herb garden. Used interchangeably with oregano
Mint After 8	Sun/wd/Hr	Delicious chocolate-mint scented foliage sets it apart from other mints-blooms in spring are a treat for the senses.
Mint Chocolate	Sun/wd/Hr	Leaves of chocolate mint plants add versatility to drinks, desserts and garnishes.
Mint Mojito	Sun/wd/Hr	very very popular for Mojito cocktails
Mint Moroccan	Sun/wd/Hr	the flowers are edible. The leaves have an intense spearmint flavor that can be enjoyed fresh or dry.
Mint Orange	Sun/wd/Hr	not only has a citrus aroma and flavor, but it is considerably spicier and stronger than most mints. teas
Mint Peppermint(cuttings)	Sun/wd/Hr	relaxes the digestion system causing belching,also for headaches, bowel,muscle & nerve conditions
Mint Spearmint (cuttings)	Psbest/Wd.M/Hr	mint jelly, teas, more flavorful before it flowers-don't forget that mint can be kept under control in a pot
Mint Strawberry(cuttings)	Psbest/Wd.M/Hr	use in salads, drinks & any other recipes using Mint but with a Strawberry flavor
Nepeta common	Sun/wd/Hr	Catnip, Excellent for tea
Oregano greek	pH6.7/Wd/S	best known with tomato sauce, hot peppery flavor
Oregano Italian	Sun/wd/Hr	Its taste is zesty and strong and is commonly used in Italian dishes.
Parsley Italian & Curled	Sun/wd/Hr	Italian(flat leaf) stronger flavor & most popular by chef's, curled more popular to decorate food
Pennyroyal	Ps/M	Spearmint aromamedicinal including insect bites, digestive issues,pain relever; do NOT use in large quantities
Rosemary off Arp	Sun/wd/Hr	More hardy than most Rosemary'sgood flavor for culinary use; Well-suited to regular pruning for small topiaries. Evergreen.
Rosemary off Barbecue	Sun/wd/Hr	makes an excellent potted plant. Valuable culinary uses...Not hardy
Rosemary off (seed)	Sun/wd/Hr	many culinary uses. Rosemary compliments pork, fish, lamb, poultry, wild game, mushrooms & potatoes
Rosemary off (cuttings)	Sun/wd/Hr	this Rosemary is a true Rosemary grown from cuttings instead of seed
Rosemary off Gorizia	Sun/wd/Hr	upright(bonsai)- Spicy,ginger fragrance.Leaves are popular for seasoning meats, stews, and sauces. Not hardy
Rosemary off Salem	Sun/wd/Hr	upright variety can be used for topiary and of course for cooking & drying; pale blue flowers

Rosemary off Tuscan Blue	Sun/wd/Hr	upright & columnar. Flavor & aroma milder than others
Sage Bergarten	Sun/wd/Hr	same as common with LOTS of leaves & no flowers- sauces, stuffings,soups,salads,pork & sausage.
Sage off	Sun/wd/Hr	creeping most common type for flavoring
Sage Pineapple	Sun/wd/Hr	younger leaves have a greater pineapple scent. steeped in hot water for tea or chopped up and used in other fruit beverages and smoothies.
Sage Purple	Sun/wd/Hr	attractive edible border around herb gardens and vegetable gardens. The flowers attract butterflies and beneficial insects as well.
Sage Tri-color	Sun/wd/Hr	although this herb has the same uses as regular Sage the Tri-color is mainly ornamental..hardy
Savory Summer	Sun/wd/Hr	lemon for tea, summer savory the most popular for flavoring
Stevia	Sun/wd/Hr	a sweetner from natural sources, V V SWEET
Tarragon French(cuttings)	Sun/wd/Hr	essential in sauces,omlettes, marinated meats , so many uses, crush leaves & add to cheese sauce
Thyme Doone Valley	Sun/wd/Hr	perfect small leafed & very flat, great for walkways & easily to propogate
Thyme French	Sun/wd/Hr	Summer Thyme” is an ideal culinary ingredient. With a spicy aroma, thrives as an herb that enhances and preserves food!
Thyme v English	Sun/wd/Hr	although thyme's have different uses all are useful in cooking
Thyme Spicy Orange	Sun/wd/Hr	2-3" H will bring a delicious scent to your garden. Plant along pathways, in rock gardens, in containers. Not sure if edible
Thyme v Golden Lemon	Sun/wd/Hr	This thyme, with its colorful leaves and slight lemon scent,
Thyme v Pink Chintz		
Thyme v Silver Edge		
Verbena Lemon		
Zaatar(origanum syriacum		

Helpful Hints:

Herbs grow best in deep, composted amended soil in a sunny location!

Planting an herb garden is not any different than any other kind of garden. Herbs generally require full sun, and it might be necessary to protect your garden from drying winds with a fence or screen. Herbs aren't particular about the soil but as with most plants, do require good drainage with added compost or well-rotted manure. Consider building raised beds. Add definition & visual interest with paths. Curved paths add more interest & as a focal point at the end of a path add statuary, a sundial, or a nice bench.

Perennials

Key Terms:

VV – Very Very	SD – Sharply Drained
Wd – Well drained	LM – Leaf Mold
M – Moist	F – Fertile
W – Woodland	MT – Moisture Retentive
HR – Humus Rich	X – Excellent
DH – Deadhead	Gc – Ground Cover
S – Sandy	N – Neutral
PS – Part Shade*	A – Acid
FS – Full Sun	^ - Requires winter protection
P – Poor	Alk – Alkaline

*Part Shade: This usually means that the plant will require early morning sun opposed to noonday sun.

Bold = new this year!

Pricing: \$5.99/pack (2-4 plants/pack), 3” pots stating at \$4.99+ tax.

Errors in pricing can occur. All prices are at checkout are final.

Stay up to date with sales, news, and events by signing up for our newsletter at villagenursery.ca
 & Follow us on [Facebook](#) & [Instagram](#)

Species/Variety	Description	Price
Achillea m Paprika	Sun/any/wd-18"; long lasting, hardy red-pink flowers	\$ 9.99
Achillea Sky Fire	Sun/any/wd-10"; foliage & flower red; compact	\$ 4.99
Achillea SS Sangria	Sun/any/wd-3'-red,white eye; all Achillea attractive to butterflies & hummers	\$ 16.99
Achillea Summer Berries	Sun/any/wd-2'-rose flat-top flowers with pink overtones and creamy white eyes ,early summer to early fall. X cut	\$ 5.99
Aconitum c Bi-color	Sun/shade.wd/hr-4"; best to stake;blue/white;deer resist; long lived	\$ 12.99
Aconitum fischerii	Sun/shade.wd/hr-2"; Lav-blue flowers;Deer resist. Long lived	\$ 9.99
Actaea s Hillside Black Beauty	S-ps/clay/avg M-5' flower spikes ferny, coppery-purple foliage	\$ 26.99
Adenorpha Fairy Bells	S/wd/ 18" early blooming; violet-lavender; clump forming	\$ 19.99
Aegopodium p Variegatum	shade/wdm/Goutweed, GC that quickly forms a dense, weed-proof carpet, even under difficult growing conditions.	\$ 9.99
Agastache Mango Tango#	Sun/vwd/gravel if necessary; fragrant; long bloom time; butterflies/hummers	\$ 12.99
Ajuga Black Scallop	shade/wd/M/HR-4"-ground cover black scallop edge;short spikes of fragrant deep blue flowers	\$ 9.99
Alcea Chaters Queeny Purple	sun/wd/f 26", mid season bloomer, double deep purple-red blooms, dwarf variety, an award winner	\$ 5.99
Alcea hyb Las Vegas	sun/wd/f 5', mid- late blooming, gorgeous single mix blooms, showy flowers, makes a great display	\$ 5.99
Alcea r Chat dbl Yellow	sun/wd/f-8'; double; very stately	\$ 9.99
Alcea r Mars Magic	sun/wd/f-8'-brilliant red colors. single flowers on tall, sturdy stalk	\$ 5.99
Alcea r nigra	sun/wd/f-8'-Deep blackish-purple, single flowers on tall, sturdy stalk	\$ 5.99
Alcea r Peaches & Dreams	Sun/wd-4-6';fully double, peach-colored blossoms which are sometimes tinged with raspberry-pink.	\$ 5.99
Alcea rosea Blacknight	sun/wd/f-8'; single black	\$ 9.99
Alcea Chaters Magnificent Dbl Mix	sun/wd/f 6', mid- late blooming, gorgeous double mix blooms, showy flowers, tall & stately	\$ 4.99
Alchemilla mollis	sun/ps/wd/8" teeny yellow flower, foliage decorative; self seeds	\$ 9.99
Allium Chives (herb)	wd/ 18"...edible with nice round purple flower heads...	\$ 8.99
Allium Windy City	wd-16"-Rich jewel-toned, rose-purple buds open to orchid-pink flowers Like mini fireworks	\$ 12.99
Alyssum Aurinia sax Gold Rush	sun/wd- low growing prune all Alyssum back by 50% after blooming	\$ 5.99
Alyssum Gold Kobold	sun-wd-great GC; early & bright in color; prune back by 50% after flowering	\$ 9.99
Amsonia Blue Ice	sun-ps/wd/M but not soggy-2'- cut back by 30-50% after flowering to maintain shape; 1st rate garden plant	\$ 16.99
Amsonia Butterscotch	sun/wd 3'-Tall arching stems with long narrow leaves give this plant a very delicate and graceful appearance, LT Blue Fls; E-late summer	\$ 16.99
Amsonia t Storm Cloud	sun/wd/Mbut not soggy-2';blue shades, blooms early. Hardy. Fall interest	\$ 19.99
Anemone Honorine Jobert	Ps/wd/20"-slightly cupped white flowers; A must have late season bloomer; a well behaved grower	\$ 16.99
Aquilegia Kirigami Rose Pink	sun-ps- 22" Rose Pink shades.; long lasting cut flower	\$ 9.99
Aquilegia EB Blue White	sun-ps/wd-12"-compact a profusion of long-spurred, bright blue and white flowers. late spring to early summer,	\$ 4.99
Aquilegia EB Red White	sun-ps/wd-12"-compact a profusion of long-spurred, bright red and pale yellow flowers. late spring to early summer,	\$ 4.99
Aquilegia v Bk Barlow	sun-ps-2-3'- dbl rich purple black flowers;remove faded stems to promote re-bloom	\$ 9.99
Armeria Dreamland	s/wd-15" Pink; very versatile & attractive to beneficials; deer resist	\$ 16.99
Arenaria m Blizz cmpt	S/wd- early;8"; Sandwort; attractive to pollinators	\$ 5.99
Artemesia Silver Lining	S/poor;16" x 30; broadly dissected silver leaves	\$ 19.99
Artemesia Silver Mound	sun/wd 6", mid season bloomer, nice mounding form, cut back when foliage gets straggly	\$ 12.99
Artemesia Sunfern™ Olympia	sun/wd/DT-18" Russian Wormwood; deer resist;non invasive	\$ 12.99
Asarum splendens[Wild Ginger]	Ps/M/wd/HR/GC 8" vigorous grower with elongated dark green heart shaped leaves with purple underneath;	
Asclepias i Cinderella	sun/med- M soils-2-4';pink to dk pink with white crowns;fragrant;good cut; pollinators; Native	\$ 12.99
Asclepias i Ice Ballet	sun/med-2-3' tall; the Incarnata(Swamp Milkweed) a favourite pollinator especially for the Monarch Butterfly	\$ 9.99

Asclepias tub Hello Yellow	sun/med-2 x 2' attracts bees & butterflies	\$ 9.99
Asclepias tuberosa	sun/wd/M 18", excellent summer blooms; yellow-orange; fragrant & attractive to butterflies	\$ 5.99
Aster n-b Marie Ballard	S/wd-3'-2" fully dbl violet blue fls; X attractive; late blooming; pollinators	\$ 9.99
Aster n-b Midnight Sky	S/wd-3'-2" fully dbl dark blue fls; X attractive; late blooming ; pollinators	\$ 12.99
Aster n-b Royal Ruby	S/wd-3'-2" fully dbl dark red fls; X attractive; late blooming; pollinators	\$ 9.99
Astilbe a August Light	Ps/wd/M - 30" scarlet red foliage with creamy white flowers	\$ 16.99
Astilbe Delft Lace	Ps/wd/M 3' x 2'-very long, apricot pink flower plumes borne on upright and sturdy bright red stems.	\$ 16.99
Astilbe j Deutschalnd	Ps/wd/M-20"; green foliage; white plumes	\$ 9.99
Astilbe Moccachino	Ps/wd/M-20" reddish stems & foliage; white flowers	\$ 12.99
Astilbe Rise & Shine	Ps/wd/M -27"; Large 8" long, hot pink, pyramidal plumes	\$ 16.99
Astilbe t Ostrich Plume	PS/wd/M-40"coral-rose, arching plumes are very large, open,& drooping; very different than typical astilbe flowers	\$ 9.99
Astrantia Star of Billions	sun-ps/M-2' papery white flowers; long bloom; pollinators	\$ 16.99
Baptisia australis	S/wd/M 3-4' purple, lupine-like flowers in erect racemes (to 12") atop flower spikes	\$ 12.99
Baptisia Honey Roasted#	sun/wd/M-4' gold flowers age into a mahogany at the same time	\$ 26.99
Baptisia Indigo Spires#	sun/wd/M-4'- long purple spikes with deep yellow keel	\$ 26.99
Bellis Habanera Mix	sun/wd 4", continuous 1" blooms, mixture of red, pink & white colors	\$ 5.99
Bergenia Peppermint Patty	s-ps/wd-22"-bright pink flowers have a pink throat , edged in pink	\$ 26.99
Brunnera Jack Frost	Ps/mod M-1x1'- Small, forget-me-not-like flowers of light blue with yellow centres	\$ 21.99
Cactus Prickly Pear(Optunia)	sun/V.V.Wd 8", mid season blooms, use high potash to bring into flower, let dry out completely in winter	\$ 9.99
Calamintha n Mauvette Blue	S/wd/avg-12" sweet minty fragrance ; purple flowers that stand up well; pollinators; good cut	\$ 9.99
Campanula Blue Waterfall	PS/loamy 1' x 30" smothering itself all season with lav-blu fls; fast growing GC	\$ 12.99
Campanula g Freya (Clustered Bellflower)	a knee-high clump that bear large clusters of star-shaped, lilac-purple flowers in early summer. Superb for cutting.	\$ 16.99
Campanula gar Dickson's Gold	S-ps/wd/MM-6", clump forming yellow leaves with lavender-blue flowers	\$ 9.99
Campanula m Champion Blue	F sun/wd- compact heavy bloomer with deep, dark, purple-blue, bell shaped flowers. X cut Attracts hummingbirds	\$ 4.99
Campanula Pearl white (white clip	sun-ps-8" opens up to upward facing 'cup-like' blooms...very nice; mid-season blooms	\$ 5.99
Campanula Rapido Blue blue clip	sun-ps-8" opens up to upward facing 'cup-like' blooms...very nice; mid-season blooms	\$ 5.99
Carnation Grenadine Mix	sun/wd/avg 24", mid season blooms, excellent selection, good cut flowers	\$ 5.99
Centaurea Amethyst Dream	S-ps/wd/-20"; radiant royal purple thistle like flowers in spring- E.summer	\$ 16.99
Centranthus rubra Cocc	sun/wd-2'-CTS Old World wildflower with clusters of tiny dark red flower . A tough, durable plant	\$ 5.99
Cerastium tomentosum	sun/dry 5", early bloomer, snow-in-summer, large white flowers, abundant blooming	\$ 5.99
Ceratostigma plumbaginoides	ps-wd/avg-12" Leadwort; late summer deep purple blooms; great for underplanting	\$ 9.99
Cimicifuga Misty Blue	PS/M/HR- 30"-sml reddish stems; blue green foliage with white flowers	\$ 19.99
Convallaria maj Rosea	shade to deep shade/M/wd-8" single waxy bell shaped fragrant flowers..invasive	\$ 9.99
Coreopsis Double the Sun	sun/wd-12-14"- offers X heat and drought tolerance once established; large semi dbl yellow flowers	\$ 5.99
Coreopsis g Sunfire	sun-wd.-16-18"; upright bushy plant loaded with bright yellow flowers; DH for repeat blooms	\$ 5.99
Coreopsis Jethro Tull	Sun/any/wd/M-12"- blooms profusely early- mid summer golden flowers	\$ 12.99
Coreopsis Szl&Spc Zesty Zingr#	Sun/any/wd/M 18"-starry ivory flowers with magenta red tips	\$ 12.99
Coreopsis Uptick Red	Sun/any/wd/M- 12"-red flowers with yellow edges;cut	\$ 12.99
Crocsmia Emily McKenzie	Sun/30" bright orange flowers with mahogany throat; must be lifted in Fall; NOT hardy	\$ 12.99
Crocsmia Lucifer 10-12cm	sun/wd 30", mid season blooms, long lasting intense red blooms, must be lifted & dried	\$ 12.99
Darmera peltata	Ps/woodland-4-5'- large, glossy, rounded leaves to 18 in. across;Clusters of soft pink flowers appear before the leaves in e sprng	\$ 9.99
Delosp Granita Raspberry#	F sun/wd 5"- a profusion of eye-catching, dime-sized daisy-like flowers	\$ 12.99
Delosp Red Mountain Flame#	F sun/wd 2-3"tall & spreads vigorously 18" Stunning; succulent; Orange & Magenta w white eye	\$ 12.99
Delphinium Cobalt Dreams	sun-ps/wd/M/HR- 4'- bright blue blooms with white bee from early summer to fall	\$ 12.99
Delphinium Del dkBlue wht B Dasante Blue	sun-ps/wd/M/HR- 20"- Dk Blue white B	\$ 5.99

Delphinium Delphina Pink w Bee[lilac rse	sun-ps/wd/M/HR- 20"- Pink w Bee	\$ 5.99
Delphinium Guardian Blue	sun-ps/wd/M/HR-3'5"-tall spikes of satiny flowers. mid-sized with deep-blue petals & strong stems	\$ 5.99
Delphinium MF Lavender wht B	sun-ps/wd/M/HR- 2-3' large semi dbl lavender florets with white B	\$ 5.99
Delphinium PG Black Knight	sun/M/wd- 4-6' dark purple with white bees.... For best results provide staking	\$ 5.99
Delphinium PG Mix	sun-ps/wd/m/hr -7', early to late blooming,flowers are semi-double to double mixed colors	\$ 5.99
Dian Barbarini Purple Pcot	sun/wd/M 8" dwarf, compact,fully winter hardy; Purple Picotee	\$ 5.99
Dianthus b Barbarini Mix	sun/wd/M 8"-dwarf Sw Wm- late summer blooms of pink, white red; DH for more flowers	\$ 5.99
Dianthus b Rockin Red	sun/wd/provide moisture-18" use in baking etc for clove flavoring; barbatus...sweet william	\$ 5.99
Dianthus b Sw Wm	sun/wd/provide moisture-3' Tall old fashioned Dbl Mix of brilliant colors	\$ 5.99
Dianthus delt Roseus	sun/wd/M-8-10"; a rosy-red spreading border plant	\$ 5.99
Dianthus delt Artic Fire	sun/wd/M-10-12"; blooms profusely with frilly white serrated petals surrounding a deep fiery red eye.	\$ 5.99
Dianthus1st Scent Coconut Surp	sun/wd/M-1'- dbl white petals with burgundy red eye & spicy fragrance	\$ 12.99
Dianthus Pink Fire	sun/wd/M -12"-fiery pink, fully dbl flowers & grey green foliage; clove like scent	\$ 12.99
Dianthus PP Appleblossom Burst	sun/wd/M -12" semi dbl color ranging from white to pibk blush; fragrant	\$ 16.99
Dianthus PP Double Bubble	sun/wd/M -12" medium pink flowers with blue-green foliage. Very floriferous and a petite pkg	\$ 16.99
Dicentra s Alba	sun-ps/wd/M/HR 44", mid season blooms, old fashioned bleeding heart, white flowers	\$ 19.99
Dicentra s Valentine Hordival	sun-ps/wd/M/HR-30" deep red heart shaped flowers...Filtered sun best for Bleeding Hearts	\$ 21.99
Dicentra spectabilis	sun-ps/wd/M/HR 44", mid season bloomer, old fashioned bleeding heart, pink flowers	\$ 16.99
Dicentra Sweet Hearts	sun-ps/wd/M/HR-16" fern like foliage rosy pink	\$ 24.99
Dictamus albus Albiflorus	Sun-ps/M/HR-2' tall white star shaped spikes; glossy foliage has a Citrus scent; once situated is long lived; plant with Peonies	\$ 12.99
Digitalis Candy Mntn Rose	ps/wd/HR/M-3'-upright spikes of rose-pink, pale throats with darker spots. Early to mid summer	5.99/ 9.99
Digitalis Dalmation Mix	ps/wd/M/HR 4', blooms early to late, large bellflowers, dense spikes, healthy & uniform grower.	\$ 5.99
Digitalis Dalmation Peach	ps/wd/M/HR-4'-upright funnel-shaped, soft peach flowers with tiny orange speckled throats.Fast growing. Early to mid flowering	\$ 5.99
Digitalis Dalmation Purple	ps/wd/M/HR-4'-boasting upright spikes of outward facing, lilac purple flowers with maroon spotted throats. Early to mid flowering	\$ 5.99
Digitalis Dalmation Rose	ps/wd/M/HR--4'rose tubular flowers with violet overtones and deep purple spots	\$ 5.99
Digitalis Dalmation White	ps/wd/M/HR4'-The pure-white flowers on the upright stems, have a pretty freckling of plum coloured markings in their throat,	\$ 5.99
Digitalis Foxy	ps/wd/M/HR-2'-Spikes of creamy-white, mauve and pink flowers with spotted throats; Early to mid flowering	\$ 5.99
Dodecatheon meadia Aphrodite	S-PS/wd- 20" bright fuchia fls.reflexed petal giving the allusion of shooting star	\$ 9.99
Doronicum o Leonardo'	Ps/M-2' - uncommon,spring blooming with attractively toothed foliage and daisy-like yellow flowers	\$ 9.99
Echinacea CCD The Fuch is Brt#	sun/wd-20"-4.5" fuchsia flowers with dark cone. Bees, birds,butterflies	\$ 19.99
Echinacea Dbl Dipd Rnbw Shrbt#	sun/wd--3' 4.5" fully double light pink -coral peachbees, birds butterflies	\$ 19.99
Echinacea pur Som Festa Ornge	sun/wd-20" intense orange flowers, 3" across with wide of drooping petals & a copper central cone.	\$ 12.99
Echinacea pur Cheyenne Spirit	sun/wd-26-28"; 2013 AAS ;flower colors purple, pink, red and orange tones to lighter yellows, creams and white	\$ 4.99
Echinacea pur Green Twister	sun/wd-28-36"- green coneflower will show natural variation in the color and size of the green edge	\$ 4.99
Echinacea pur Magnus super	sun/wd 44", mid season blooms, intense red. 1998 plant of the year	\$ 5.99
Echinacea pur PollyNation Magenta	sun/wd- 20" Unique, intense rose flowers with dark rose centre.	\$ 4.99
Echinacea pur Pow Wow White	sun/wd- 20"-Pure white with golden yellow cone'3-4" across with wide overlapping,reflexed petals.Early-late	\$ 4.99
Echinacea p Ruby Star	sun/wd 44", CTS, improved purple coneflower with larger flowers & intense carmine-red color	\$ 4.99
Echinacea p SS Salmon	sun-wd-blooms in rich shades of salmon pink with yellow accents. Butterflies and other beneficial pollinators love this new offering,	\$ 21.99
Echinacea p Tomato Soup	sun/wd-3'-huge profusion of 6" tomato red slightly petals-bees, butterflies, birds	\$ 21.99

Echinacea pur White Swan	sun/wd -white, daisy-like flowers from early summer into early autumn. Its prominent coppery-green central cones	\$ 5.99
Echinacea pur Prarie Splendor	sun/wd-2';rose-pink flowers with 4-6" blooms...will bloom1st year from June to frost..DH	\$ 4.99
Echinacea Pretty Parasol	sun/wd-3'-V. long bloom time; attracts bees.butterflies	\$ 26.99
Echinacea purpurea	sun/wd-2';mauve-purple-pink, drooping petals also used as an herb, makes our own immune cells more efficient	\$ 5.99
Echinacea Sunny Days™ Lemon	sun/wd-20"very heavy flowering'yellow double flowers; frag, attracts pollinators	\$ 21.99
Echinops rito	sun-ps/wd- 4'-clump;blue ball shaped fls;attracted by bumblebees & nocturnal moths	\$ 4.99
Echium amoenum	F sun/D-med wd/15" - hairy lance-shaped leaves topped by striking russet-red flower spikes from late spring to frost	\$ 12.99
Eryngium a Blue Star	sun/wd-3'- heart-shaped, deeply toothed, glossy leaves.Mid to late blooms bear cone-shaped, thistle-like, silver-blue flower heads.	\$ 9.99
Eryngium planum Blue Glitter	sun/wd- 3'-glittering steel blue fls;one of the hardiest & long lived perennials	\$ 9.99
Eupatorium fi Ivory Towers	sun/M/wd -6' domed clusters of tiny, fragrant, creamy-white flower	4.99/pot
Euphorbia myrsinites	S/wd-a succulent perennial with sprawling stems of fleshy, blue-green leaves and star-shaped flowers	
Euphorbia polychroma	sun/wd 16", early blooms, light yellow, lovely color in garden	\$ 12.99
Euphorbia polychroma Bonfire#	sun/wd-14" foliage green, changing to deep maroon. bright yellow bracts in spring	\$ 19.99
Filipendula rubra Venusta	sun- ps/wd/M- 6'-large, elegant sprays of small deep pink flowers; light fragrance	\$ 12.99
Gailardia Arizona Apricot	sun/wd/F-12"-early-compact blend of apricot and yellow, a never-before-seen color mix	\$ 5.99
Gailardia Arizona Sun	sun/wd/F-12"dwarf, well branched variety that thrives in dry heat. 3" Burgundy flowers with yellow tips	\$ 5.99
Gailardia Burgundy	sun/wd-12" - wine-red; 3" across; long flowering season	\$ 9.99
Gailardia Mesa Br Bicolor A	sun/wd/F-12"dwarf long flowering season with bright orange yellow daisy-like flowers with red centres	\$ 5.99
Gailardia Mesa Red A	sun/wd/F-12"dwarf, well branched variety that thrives in dry heat. brick red petals and a darker burgundy cone CTS	\$ 5.99
Galium odoratum	Heavy to shady borders or as a GC or edging plant. Edible Can be somewhat aggressive under optimal growing conditions.fragrant	\$ 9.99
Gaultheria procumbens	PS/wd/M- a fragrant evergreen that grows best woodlands and produces red berries in winter.	\$ 16.99
Gentian Blue Cross	sun-ps/poor to avg wd-10"-intense blue violet flowers on compact, durable, drought resistant plants.	\$ 9.99
Gentian Little Pinkie	sun-ps/poor to avg wd-12"-many pink fls mid- late;comapct trumpet shaped fls	\$ 19.99
Gentian True Blue	sun-ps/poor to avg wd 2"-azure blue fls mid- late;compct trumpet shaped fls	\$ 19.99
Geranium Blue Blood	Sun-ps/wd-12" mass of purple-blue flrs with deep red veins spring and summer	\$ 9.99
Geranium m Crane Dance	Sun-ps/wd-2'-single bluish-purple flowers; cut plants back almost to the ground after flowering; red foliage in fall	\$ 16.99
Geranium Rozanne	un-ps/wd-12"-X heat tolerance and showy violet-blue flowers that appear in late spring	\$ 16.99
Geranium sang. Elke	S-ps/wd-10"strong pink flowers, upward facing; long bloom season; deer resistant	\$ 16.99
Geum Blazing Sunset	sun/wd-2'- fully double, scarlet blooms; compact yet vigorous.an excellent cut flower.Perfect border plant	\$ 9.99
Geum Pretticoats™ Peach	Sun-ps/wd/M-12" multiple flushes moisture is important	\$ 21.99
Gillenia trifoliata	PS/ rich/M 2'-upright,featuring reddish stems with starry, dainty white flowers with contrasting red calyces,	\$ 12.99
Gypsophila Summer Sparkles#	sun/wd-30"-Clouds of small white flowers float above densely branched plants from May-October.	\$ 16.99
Heath & Heather Calluna vulg	sun/wd/Ac/ 10-12" mixed selection , blooms in the summer; Heath blooms very early spring	\$ 12.99
Helenium Dbl Trouble	S/wd/M-2' pure bright yellow double flowers;mid to late blooming	\$ 9.99
Heliopsis Burning Hearts	sun/wd/avg/M-4'- unique foliage color& vibrant blooms that reach 3" across mid-late	\$ 5.99
Heliopsis Sparkling Contrast	sun/wd/avg- 2'-False Sunflower; yellow with red centre;attracts bees & butterflies	\$ 9.99
Helleborus Dbl Ellen White	sun-ps/wd/M- large white flowers with pink spots; early spring	\$ 19.99
Helleborus Wpty True Love	sun-ps/wd/M-12" dbl maroon-red flowers that bloom early in spring	\$ 39.99
Helleborus o Blue Lady	sun-ps/wd/M- cup shaped dark blue-purple flowers in late winter -early spring	\$ 19.99
Hemerocalis Marque Moon	sun-ps/avg- 24"- large 5" creamy white blooms with gold edge;mid-late summer	\$ 21.99

Hemerocalis Rocket City	sun-ps/avg- 24"- orange with darker eyezone; attracts pollinators	\$ 21.99
HEMEROCALLIS - All Varieties	Daylilies look better planted in a mixed border T (tetraploid) are higher in bud count not from tissue culture	
Hemerocallis Band of Fire	sun-ps/avg-30"-right yellow petals with large red eye and massive red edge; mid season & reblooms	\$ 16.99
Hemerocallis Born To Run	sun-ps/avg-28"-mid season, rebloomer; Rich, rosy red flowers have a creamy yellow, incredibly ruffled picotee edge	\$ 19.99
Hemerocallis ful Kwanso	sun-ps/avg-dbl apricot-orange flowers with red markings & yellow eye; mid-late	\$ 16.99
Hemerocallis Kansas Kitten	sun-ps/avg-compact, reblooming,large lavender purple with dark purple eye	\$ 19.99
Hemerocallis Chicage Fire	sun-ps/avg-34"- 6" single orange with red blooms;	\$ 12.99
Hemerocallis Orange w Ruffles	sun-ps/avg-large orange ruffled flowers that bloom early to mid summer T	\$ 12.99
Hemerocallis Orange Yellow	sun-ps/avg- bright orange-yellow blooms	\$ 12.99
Hemerocallis Dbl Orange	sun-ps/avg- dark orange large blooms	\$ 12.99
Hemerocallis Lies & Lipstick	sun-ps/avg-large pink flowers with red eye & red/gold edges; reblooms; T	\$ 16.99
Hemerocallis Pointed Perfection	sun-ps/avg-warm orange petals with pointed red eye T	\$ 16.99
Hemerocallis Schnickel Fritz	sun-ps/avg-16"-dbl white to pale creamy pink flowers with green throat re-bloom	\$ 16.99
Hemerocallis Simon's Overture	sun-ps/avg-2'- lav -rose 6"flowers with satiny deep-plum eyes and matching ruffled edges; mid	\$ 16.99
Hemerocallis Tequila & Lime	sun-ps/avg-bright yellow with green throat, light fragrance; early & reblooms late	\$ 12.99
Heuchera Cherry Cola	PS is best-rust red leaves all season with cherry red flowers; attracts pollinators	\$ 21.99
Heuchera Timeless Night#	PS is best- dark purple,almost black leaves with small pink flowers	\$ 21.99
Heucherella Pumpkin Spice	Ps is best bronze red leaves hold color well ;dark red stems white flowers	\$ 21.99
Hosta Blue Angel	ps/wd/M/HR this selection has huge heart-shaped blue green leaves with near white flowers	\$ 19.99
Hosta Cool as a Cucumber	Bitmap Bitmap ps/wd/M/HR a medium size with green & white foliage ; Lavender flowers	\$ 19.99
Hosta Emerald Charger	ps/wd/M/HR gold centre with wide green margin; lavender purple flowers	\$ 16.99
Hosta Fire & Ice	ps/wd/M/HR -widely oval slightly twisted leaves w white centre green edge;Lav fls	\$ 12.99
Hosta June	ps/wd/M/HR-1' x 2'- wide, bright yellow margins on green leaves. Lavender bell-shaped flowers	\$ 16.99
Hosta Minuteman	ps/wd/M/HR one of the most popular white margin Hosta, lavender flowers	\$ 26.99
Hosta Paradigm	ps/wd/M/HR gold leaves blue green margins; seersuckered; lavender flowers	\$ 12.99
Hosta S Diamond Lake	ps/wd/M/HR-17" heart-shaped, thick & heavily corrugated blue leaf,wavy margins. Leaves 9 x11"	\$ 24.99
Hosta White Feathers	ps/wd/M/HR-6"x10"- As it matures, the white leaves transform into a blend of green and cream. Lavender flowers; best in shade	\$ 16.99
Iberis semp Alexanders White	sun/DT-8"- large clusters of pure white flowers;reblooms in fall	\$ 16.99
Iberis Snowsation	Sun-ps/DT-6" masses of large white flowers on glossy leaves Prune lightly right after blooming to keep tidy	\$ 9.99
Iris e Dinner Plate™ Harlequin	sun/M-3'-Massive double blooms are great for growing near water. 6" double blooms are creamy white edged in purple	\$ 16.99
Iris e Greywoods Catrina	sun/M -3'-white flowers with rose violet veins & pink signals	\$ 12.99
Iris e Variegata	sun/M-wet-small dark purple flowers with yellow eye	\$ 12.99
Iris g Recurring Delight	sun/M-3'- rebloom; purple-yellow ruffled, fragrant	\$ 19.99
Iris g Skyfire	sun/M-3' a pure bright orange garden iris, with ruffled, lightly fragrant flowers; reblooms	\$ 19.99
Iris Louisiana Blk Gamecock	sun/M-huge deep purple blooms with gold highlights on each petal; vigorous	\$ 16.99
Iris p Riveting	sun/M-dwarf bearded; Ruffled white with dark blue-purple spot on falls;yellow beard	\$ 16.99
Iris ps Cat's Eye	sun/M-dwarf-clumps of rich rose-red blooms bear deep red centres; earliest to bloom	\$ 26.99
Iris pseu Tsukiyono	sun/M- 3-4'-pale lavender flowers adorned with deep purple eyelash	\$ 16.99
Iris s Jewelled Crown	sun/M- 30"- rich wine purple standards and falls and lighter blue-purple styles; blue & yellow falls	\$ 12.99
Iris s Paprikash	sun-ps/M-20" Violet-peach standards with orange-red falls &deep yellow signals are veined in red 4" flowers	\$ 12.99
Iris s Pink Parfait	sun/M 2'- layered lavender pink blooms pale margins & yellow accents;	\$ 9.99
Iris s Purplelicious	sun/M- 3'-rich velvety purple flowers; blooms late spring into summer;	\$ 9.99
Iris s Purring Tiger	sun/M-18"- dusty lavender petal with golden yellow signal and purple veining	\$ 16.99
Iris s Sunfisher	S-ps/HR/ M- 28"-deep yellow petals with light yellow beard; late spring- E summer	\$ 16.99
Kniphofia Flamenco Mix	sun/wd/f 22", mid to late season blooms, yellow-orange, flaming red	\$ 5.99

Lavender a Hidcote Superior	sun/wd/avg- 20", mid season blooms. Silvery-grey leaves. Best color of all lavenders	\$ 9.99
Lavender a Munstead	sun/wd/avg 14", early to late season blooms, bright lilac-blue flowers, silver-grey foliage. Dwarf	5.99/9.99
Lavender a Super Blue	sun/wd-18"-Fragrant rich lavender-blue flowers deliver a soothing scent in early and midsummer.	\$ 12.99
Lavender a Vicenza Blue	sun/wd-fragrant flws of lavender blue make it a favourite for herb gardens and in perennial border	\$ 5.99
Lavender Ellagance Purple	sun/wd/avg-14"-Deep purple flowers on tall spikes bloom right from 1st year, Gold Metal winner for it's deep color	\$ 5.99
Lavender Ellagance Snow	sun/wd-14"-1st year flowering with large white flower spikes. Drought and heat tolerant, its compact foliage and dwarf habit	\$ 5.99
Lavender i Grosso	sun/wd/avg 24", continuous blooming, very fragrant deep violet blooms	\$ 9.99
Lavender i Phenomenal	sun/wd/avg-2', fragrant,multiple lavender blooms, great in containers & a great accent plant. Bees love lavender & butterflies	\$ 16.99
Leucanthemum Crazy Daisy	sun/good drainage-2'-DH-spectacular floral display;early-mid summer;fantastic frilly white flowers	\$ 5.99
Leucanthemum Madonna	sun-/good drainage-10"-beautiful presence of Shasta Daisies for a sunny border . Bright white	\$ 5.99
Leucanthemum s I C Dream	sun/good drainage-16"-intense yellow buds open cream to near white, fully double, pom-pom-like flowers	\$ 12.99
Leucanthemum s Whoops A Daisy	sun-ps/M -15" HUGE 3" white blooms with yellow centers covers the whole mounded plant.	\$ 12.99
Lewesia c Elise Mix	Sun/wd-6"-one of the most treasured rock garden plants. fleshy rosette of tough evergreen leaves, variety of colors & bi-colors	\$ 9.99
Lewisia Sunset Strain "	WD/6" clusters bloom in sunset shades of yellow, peach, salmon, orange and pink. Best in a cool rock garden setting,	\$ 9.99
Liatris s Floristan Violet	Sun-2'-vivid magenta-purple flower spikes up to a foot long; a staple in cutting garden&bouquets and the perfect choice	\$ 5.99
Liatris spicata Kobold Orig	sun/poor-18"-Liatris is a very strong vertical accent; 'Kobold' is one of the best selections; purple-not grown from seed	\$ 16.99
Lilies a Landini	sun-ps/wd -3'-deep dark red; blooms late spring-early summer	\$ 9.99
Lilies m Fairy Morning	sun-ps/wd 3-4'-pinkish blossoms,peach at centre, burgundy spots Turks cap	\$ 12.99
Lilies o Josephine	sun-ps/wd-4'- V. fragrant up to 10" light pink flowers with dk spots; mid-late bloom	\$ 9.99
Lilies o Roselily Anouska	sun-ps/wd-4'- upward facing white dbl very fragrant with bright pink edges	\$ 9.99
Lilies Red Velvet	sun-ps/wd -4-6'- Tiger; long panicles of velvety deep red petals	\$ 9.99
Lilies a Sundew	sun-ps/wd-2-3'- double yellow; blooms early summer	\$ 9.99
Lilies a Tiny Padhye	sun- very large white with deep reddish stains at base blooms all summer	\$ 9.99
Linium flavum Compactum	sun/wd-15" This superb perennial covers itself with masses of bright golden-yellow flowers all summer long.	5.99/9.99
Lobelia Starship Scarlet	sun/wd/HR-2'; Free flowering,floriferous, hummers; scarlet blooms & near black stems	4.99/pot
Lobelia SP cardinalis	species of bell flower; red; beautiful around damp areas and water garden edging	\$ 9.99
Lupine Gallery Blue bi color	Sun-Ps/M/N -24"- lovely & showy... they will drop their seed so keep this I mind as to where you plant	\$ 5.99
Lupin Gallery Mini Pink Bcol	Sun-Ps/M/N -24"- lovely & showy... they will drop their seed so keep this I mind as to where you plant	\$ 12.99
Lupine Gallery Mix	Sun-Ps/M/N -24"- lovely & showy... they will drop their seed so keep this I mind as to where you plant	\$ 5.99
Lupine Gallery Red	sun-ps/wd- 28"- so beautiful & bright in the garden	\$ 5.99
Lupine Gallery Yellow	sun-ps/wd-18"- lovely & showy..will drop their seed so keep this in mind	\$ 5.99
Lysmachia Night Light	sun/wd-123", compact, yellow flowers, summer blooming	\$ 16.99
Malva Zebrina	sun-ps/wd/S l4-5' large, red flame blossoms, up to 7", recurved tepals tipped in buttery yellow	\$ 9.99
Monarda Balmy™ Lilac	sun-ps/wd/M/HR-12" PM resis Bright compact flowers; attract butterflies, hummers	\$ 16.99
Monarda Balmy™ Purple	sun-ps/wd/M/HR-12" PM resis Bright compact flowers; attract butterflies, hummers	\$ 16.99
Monarda Balmy™ Rose	sun-ps/wd/M/HR-12" PM resis Bright compact flowers; attract butterflies, hummers	\$ 16.99
Monarda Jacob Cline	sun-ps/wd/M/HR-3'-heads of long tubular deep red flowers.One of the best mildew resistant varieties	\$ 9.99
Monarda Panorama Mix	sun-ps/wd/M/HR- 42", mid season blooms, popular bee plants	\$ 5.99
Monarda Panorama Red	sun-ps/wd/M/HR 42", Red mid season blooms, popular bee & hummer plants	\$ 5.99
Monarda Pink Lace	sun-ps/wd/M/HR-16"- Pink flowers, purple centres; fragrant;Bees, B'flies etc	\$ 16.99

Monarda Red	sun-ps/wd/M/HR-30"- Bright spiky hairdo blooms.... Can spread	\$ 5.99
Monarda Snow White	sun-ps/wd/S-30" an older variety but still remains one of the best 'whites'; blooms mid summer to late fall	\$ 9.99
Montauk Daisy	sun/wd-28", Nipponanthemum; fall blooming pure white fls with yellow centres.Very nice; deer & pest resistant	\$ 12.99
Muhlenburgin Undaunted	Sun-30"; blooms late with nice bright pink heads. May self seed	\$ 12.99
Myosotis Bellamy Blue	sun-ps/wd/HR-6-8"- clusters of sky-blue flowers bloom early in the spring.	\$ 5.99
Nepeta Purrsian Blue#	sun-ps/wd/HR -18"- compact & tidy, blooms summer into the fall, nice fragrant	\$ 16.99
Nepeta Cat's Pajamas#	sun-ps/wd-12"-ball-shaped habit carries long, dark flower stems that hold indigo blue flowers.Early blooming	\$ 16.99
Nepeta Kitten Around	sun-ps/wd-12" deep blue flowers summer & into the fall; use in containers as well	\$ 9.99
Nepeta r Walker's Low	sun-ps/wd-2-3'- high performance & low maintenance variety;	\$ 16.99
Nipponanthemum leu. Montauk Daisy... See Montauk Daisy		
Oenothera Yella Fella	sun/wd-12" bright yellow flowers. Attractive to bees, butterflies	\$ 9.99
Opuntia polyacantha	sun/V.V.Wd 8", mid season blooms, use high potash to bring into flower, let dry out completely in winter[prickly pear]	\$ 9.99
Peony l Francois Ortegat	sun/wd/M-3' old-fashioned large double flowers of vibrant crimson pink;mid spring-mid summer; v little fragrance	\$ 26.99
Papaver n Champagne Bubbles	sun-ps/wd/HR/M-18" usually self-seed and come back year after year;mixture of orange, yellows. white, red's	\$ 5.99
Papaver or Beauty of Livermore	sun-ps/wd/HR-3'- large, crepe papery, cup-shaped, scarlet red flowers with a dark eye and black splotches at their	\$ 5.99
Papaver or Brilliant	sun best/wd/HR/ 36" provide a cheerful display of huge brilliant scarlet red satiny flowers in L.spring and e summer.	\$ 5.99
Papaver o Harvest Moon	sun-ps/wd/hr/M/18"- deep, rich tangerine shade that stand out wildly in the garden.	\$ 9.99
Papaver o Pizzcato Mix	sun best//wd/hr This compact-growing strain features flowers in shades of white, pink, salmon and scarlet	\$ 5.99
Papaver o White Ruffles	sun/wd- 12-16" highly ruffles, white, spring blooming s new introduction	\$ 12.99
Papaver or Vict Louise[Fruit Punch	sun-ps/wd/HR- 6- " bold salmon round flowers with black eyes at the ends of the stems	\$ 5.99
Papaver orientale	sun best/wd/HR-3' huge, silky-satin flowers in shades of red, orange, white or pink. Plant in small groups for best display	\$ 9.99
Papaver o Red Rumble	sun-ps/wd/hr/M/ 30" super sized vibrant red; disease resistant;	\$ 16.99
Peony l Raspberry Sundae	sun/wd/M- 36" 10" bomb sized blooms are sweetly fragrant; a best seller; Early	\$ 26.99
Peony lact Alexander Fleming	sun/wd/M- 3' X fragrant, numerous side buds; rose-pink ; mid season blooms	\$ 39.99
Peony lact Festiva Maxima	sun/wd/M- 3'- fragrant; fully double; white with crimsom flecks L. spring- E summer	\$ 39.99
Perovskia atrip Bl Jean Baby#	sun/dry/wd- 3' lavender blue flowers; fragrant, deer resistant; fills in quickly	\$ 16.99
Pervoskia a Crazy Blue	sun/dry/wd-18"-compact& colorfu & easy care for, border or mass planting. Violet-blue flower spikes	\$ 12.99
Perovskia atrip Denim n Lace#	sun/dry/wd-3'- Lacey blue flowers, aromatic foliage; hummers & butterflies	\$ 19.99
Perovskia atriplicifolia	sun/dry/wd-15" -masses of lavender colored flowers on aromatic stems; Pervoskias love the heat	\$ 16.99
Phlox Fashnbly Erly Crystal#	sun/dry/AM-3' -white flowers with a faint light purple eye; Early blooming into fall	\$ 16.99
Phlox p Flame® Coral	sun/dry/AM-18" fragrant -eye catching, bright flowers bloom for weeks; mid-late	\$ 12.99
Phlox p Flame® Pink	sun/dry/AM-18" fragrant -eye catching, bright flowers bloom for weeks; mid-late	\$ 12.99
Phlox p Flame® Purple	sun/dry/AM-18" fragrant -eye catching, bright flowers bloom for weeks; mid-late	\$ 12.99
Phlox p Flame® Red	sun/dry/AM-18" fragrant -eye catching, bright flowers bloom for weeks; mid-late	\$ 12.99
Phlox p David	sun/dry/AM -up to 4'- fragrant pure white free flowering;attractive to pollinators	\$ 12.99
Phlox s Amazing Grace	sun/dry/AM 4"- starry, pure white flowers with a tiny purple eye. It's amazing!	\$ 12.99
Phlox s Candy Stripes	sun/dry/ 4"- is a delightful evergreen perennial with masses of candy pink and white striped flowers which	\$ 12.99
Phlox p Flame® Blue	sun/wd/m-12-20" fragrant,blue&white petals opening from dark blue buds, mid	\$ 12.99
Phlox s Emerald Pink	sun/dry/ -4"- masses of starry, hot-pink flowers which blanket the dark green, needle-like foliage in mid to late spring.	\$ 12.99
Phlox s Goldiphlox Cherry	sun/dry/AM- 3-6"- dark pink spring blooms	\$ 12.99

Phlox s Red Wings	sun/dry/ 4"-an eye-catching, evergreen perennial with masses of starry, pinkish-crimson flowers adorned with dark red center eyes.	\$ 12.99
Phlox s Scarlet Flame	sun/dry/ 4"- is an incredibly eye-catching evergreen perennial with masses of vibrant scarlet-red flowers,	\$ 12.99
Phlox s Spring Scarlet	sun/wd/m-6" eye-catching evergreen perennial with masses of vibrant scarlet-red flowers	\$ 12.99
Phlox s Vida's pink	sun/wd/m-6"..excellent early rock garden plant; bright pink	\$ 12.99
Phlox s Violet Pinwheels	sun/wd 4-6" Alpine Phlox-vivid purple; blooms very early; a prolific bloomer	\$ 12.99
Physalis alk v Franchetti	sun/wd/m 24", late season blooms, Chinese Lantern, this can be invasive but it is lovely in fall bouquets	4.99-9.99
Platycodon Astra Double Blue	sun-ps/wd-a short dwarf balloon flower with double periwinkle-blue flowers in summer	\$ 5.99
Platycodon Astra Pink	sun-ps/wd-a short dwarf balloon flower with semi-double bright pink flowers in summer	\$ 5.99
Platycodon Astra White	sun-ps/wd-10"-Single, white, star-shaped flowers have dark blue lines centred in each petal; Dwarf, compact mound	\$ 5.99
Polygonatum o Ruby Slipper	shade/wd/M/Hr-20" clump forming fragrant white drooping flowers with red stems	\$ 29.99
Potentilla Gibson's Scarlet	sun/any -18" bears clusters of single, extremely vibrant red flowers all summer	\$ 9.99
Primula denticulata	sun-ps/wd/M-12"-dense rounded heads of lilac, purple,blue,pink,white colors	
Primula Oakleaf Yellow Picotee	sun-ps/wd/M upright clump of br yellow flowers with orange-red edges in early spring. Prefers the cool weather season.	\$ 16.99
Primula Princess Mix	sun-ps/wd/M-10"-Bright flowers are yellow, maroon, lavender, white, pink, or blue-violet, most have large eyes of a contrasting color	\$ 5.99
Pulmonaria Raspberry Frost	p shade/Hr/M-6-8"- silver spotted, lance-shaped leaves and giant cobalt-blue flowers in early spring and continue for months.	\$ 16.99
Pulmonaria Twinkle Toes	morning sun/wd-16" Light periwinkle blue flowers. Dark green leaves; silver sprinkling. Low, mounded habit	\$ 16.99
Pulsitila v Alba	sun/wd-8" -boasting large, bell-shaped, pure white flowers, up to 3" on short stems in early spring.	\$ 9.99
Pulsitila v Rubra	sun/wd-8" boasting large, bell-shaped, redflowers, up to 3", on short stems in early spring.	\$ 9.99
Pulsitila v Violet	sun/wd-8" boasting large, bell-shaped, purple-violet flowers, up to 3", on short stems in early spring.	\$ 9.99
Pycnanthemum muticum	HR/M PS3' one of the best nectar sources for native butterflies ;not invasive	\$ 12.99
Rodgersia p Chocolate Wings	dappled shade/M/hr-2'-it produces big plumes of glowing deep-pink flowers in early summer,	\$ 19.99
Rudbeckia Autumn Colors	sun/wd/M-2'-Bicoloured shades of burgundy and yellow petals surrounding a dark cone	\$ 5.99
Rudbeckia Cherry Brandy	sun/wd/M- unique cherry to deep-red blooms that are 2-3" wide.gives impressive garden performance mid summer	5.99-9.99
Rudbeckia Pawnee Spirit [Denver Daisy	sun/wd-M-10" golden flowers, 3"rich mahogany w dark chocolate cone from early summer to frost. Blooms Profusely early to late	\$ 5.99
Rudbeckia f Goldblitz(goldstrum)	sun-ps/wd/M-30" Large 3-4" deep golden-yellow flowers with black cones. Plants bloom midsummer into fall..easy to grow	4.99/pot
Rudbeckia l Goldquelle	sun-ps/wd/M-2'- dark green leaves and bright lemon-yellow, fully double flowers	\$ 9.99
Rudbeckia n Herbstonne	sun-ps/wd/M-6'- yellow, daisy-like flowers all summer & fall	\$ 9.99
Sagina Crispy	sun/v.wd/gritty 5", mid season blooms, very small white flower, soft light green foliage, good ground cover	\$ 5.99
Salvia Blue by You	sun/wd/M- 2' Long, bright blue flower spikes.DH- remove spent flowers	\$ 9.99
SalviaSP nem Bumbleberry#	sun/wd/ M -12"-dark fuchsia pink flowers on dark wine purple stems; type of Sage	\$ 19.99
Salvia n New Dimension Rose	sun/wd/ M -16"-sheer back spent blooms and watch the many times this dark pink beauty will rebloom	\$ 19.99
Salvia n New Dimensions Blue	sun/wd/M-18"-chubby spikes of deep and intense violet-blue flowers appearing in late spring. Fragrant-polinators	\$ 5.99
SalviaSP Fshnsta Ballerina Pk#	sun/wd/M-18"- soft pink flowers that are held by dark mauve pink calyces.	\$ 19.99
SalviaSP Fshnsta Evng Attire#	sun-wd/M-20" is the darkest, most vibrant blue Salvia of this collection	\$ 19.99
SalviaSP n Bumbleblue#	sun-wd/M-14" spikes of violet blue flowers with dark purple calyces in E summer.	\$ 19.99
SalviaSP Pink Profusion#	sun-wd/M-14-16" Dark violet-pink flowers on darker pink calyces	\$ 19.99
Sanguisorba Little Angel	sun/ps/F/M/wd-3'-clump-forming perennial with profuse and attractive fluffy, reddish-pink, bottlebrush flowers	\$ 16.99
Saponaria ocy Snow Tip	sun/wd 4"- loose clusters of white flowers with small green leaves; blooms in spring	\$ 5.99

Saponaria ocymoides	sun/wd 6", early blooms, good ground cover, cut back hard for re-bloom, excellent for walls	5.99/9.99
Saxifragia Touran™ Pink	sun/wd/M/Hr/gritty-8"-small rosy pink flowers with yellow greenish centre; spring	\$ 12.99
Scabiosa c Butterfly Blue	sun-ps-18"-delicate foliage & br lavender-blue flowers; early April; pollinators	\$ 9.99
Sedum After Dark	sun/dry-18" deep purple near black foliage;black buds will open to garnet red flowers	\$ 19.99
Sedum Autumn Fire	sun/dry-2'-less 'floppy' than Autumn Joy' green flowers change to rose pink in fall	\$ 12.99
Sedum Little Miss Sunshine#	sun/dry-5"- thick dark green leaves with yellow starry flowers; early-mid summer	\$ 16.99
Sedum s Voodoo	sun/dry 6" GC deep red, evergreen foliage, and rose-pink summer flowers.	\$ 5.99
Sedum Sunspark Dream Dazzler	sun/wd-6"leaves change color,dark-light purple-blue green, depending on light	\$ 16.99
Sempervivum Mix	sun'wd- 4"-mixture of differet varieties & colors	\$ 16.99
Sempervivum Ruby Heart	sun/wd/fertile-4"- deep burgundy succulent	\$ 9.99
Sidalcea Brilliant	sun-ps/wd-2'- related to Hollyhocks but smaller. Brilliant has satiny pink spikesDH hard	\$ 9.99
Silene Clifford Moor	sun-ps/wd/ variegated or yello leaves with pink flowers; L spring-E summer;bees	\$ 12.99
Silene r Rolly's Fav	sun-ps/wd-14"- lovely clump of soft foliage with tall stems topped by bright pink flower clusters. long-lasting in the garden	\$ 12.99
Solidago x Little Lemon	sun/wd/any-14"-one of the most compact forms of goldenrod on the market today,lemon-yellow plumes on upright stems	\$ 12.99
Stachy's byzantina	sun-ps/wd-20"-soft, felty silver grey leaves. Upright spikes of magenta-pink flowers form in early summer,	\$ 5.99
Stachys monieri Hummelo	S-ps/wd-20"-scalloped leaves & spikes of purplish-pink flowers;summer; pollinators	\$ 12.99
Tanacetum Robinson Red	s-ps/wd- up tp 3'- Painted daisy showy large red flowers; attracts beneficials & deer resistant	\$ 9.99
Thalictrum Yulia	Ps/M/hr-28"-lacy, refined, bluish-green foliage and its dense panicles of pink, white or purple fluffy flowers.	\$ 19.99
Thymus p Coccineus	sun/wd/N-alk ornamental GC.a dense, flat mat of evergreen, dark green leaves that are smothered in bright magenta-red flowers	\$ 16.99
Thymus psued Wolly	sun/wd/N-alk 5", early season blooms, grey-green color, soft fuzzy leaf with lavender flower	\$ 9.99
Thymus semp Mother of(Wild Thyme)	sun/wd/N-alk 12", mid season blooms, , fragrant, ground cover & between stones	\$ 5.99
Tiarella Finger Paint	Ps/M-9"Each leaf is deeply lobed with pointy edges, with an overall lacy texture. The centers of the leaves have burgundy blotches, like handprint made with paint. Ivory flowers	\$ 16.99
Tradescantia a Snowcap	sun/shade/wd/M -2' -beautiful white Spiderwort DH for lasting performance- versatile garden displays	\$ 9.99
Tradescantia Concord Grape	sun/shade/wd/M -2' beautiful deep purple Spiderwort DH for lasting performance- versatile garden displays	\$ 12.99
Tradescantia Pink Chablis	sun/shade/wd/M -2' beautiful bright pink Spiderwort DH for lasting performance- versatile garden displays	\$ 12.99
Trollius c Golden Queen	shady-ps/M/BOG-3'-bowl-shaped golden orange flowers; L spring-E summer	\$ 12.99
Trollius e Superbus	S-ps/M/bog16" -Lemon-yellow buttercup like flowers; L.spring-E.summer	\$ 9.99
Trollus Alabaster	sun-ps/M-24"-An exceptional variety of globeflower presenting large fabulous golden yellow blooms	\$ 12.99
Uvularia grandiflora	shade-Ps/HR/M-2' clusters of nodding, narrowly bell-shaped pale yellow flowers,1.5" Late spring blooming	\$ 12.99
Valerian off	sun/any-5"-VV fragrant lacy off white flowers.V.invasive, DH spent flowers quickly	\$ 9.99
Verbascum c Wedding Candles	sun/avg M/wd-3' compact variety with candelabra like spikes of white blooms with fuzzy purple centers and orange anthers,	\$ 5.99
Veronia Sky Blue	sun/wd-18"-dense upright habit; high bud count; CTS, spring - summer bloom	4.99/pot
Veronia Sky Pink	sun/wd-18"-dense upright habit; high bud count; CTS, spring - summer bloom	4.99/pot
Veronica Vernique® Raspberry	sun/wd- up to 18"-clump forming;raspberry pink flowers; blooms in late summer	\$ 12.99
Veronica Red Fox	sun/wd-up to 2'-bushy upright clump forming fuchsia pink; late summer bloom	\$ 12.99
Vinca Bowels Minor	sun-ps/wd/m/avg 18", early season blooms, excellent ground cover, evergreen	\$ 9.99
Viola c Etain	pt shade/wd- large fragrant flowers in sahadés of pale yellow or violet-purple	\$ 12.99
Viola p Eco Artist Palette	pt shade/Wd- 6" large pale lemon yellow blossoms with lavender margins. Floriferous	\$ 12.99
Viola c Halo Lilac	pt shade/Wd-10" an abundance of fragrant lilac-purple flowers with yellow centre	\$ 9.99
Viola c Halo Violet	pt shade/Wd-10" an abundance of fragrant violet-blue flowers with yellow centre	\$ 9.99

Helpful Hints:

When to Plant Perennials...

- * Perennial flowers are best planted in the spring or the fall, when temperatures are cooler.
- * These seasons give them time to get settled and grow new roots.
- * We often plant our perennials in fall when perennials are on sale and before winter arrives.
- * Smaller perennials in 4-inch pots cost less and catch up to larger perennials within one year after planting!
- * Container-grown perennials (a small plant already rooted in soil and growing):
- * Dig a hole that's a little wider (but no deeper) than the container;
- * Gently loosen the roots , add a small handful of Bonemeal & add water
- * Put in perennial & fill in with soil, firm but not packed, Water again

Pots & Containers

We promote only well grown & healthy plant material. We have built our reputation on our quality & are pleased to say we will continue to do so.

Errors in pricing can happen. All prices are final at checkout.

4.5"- Potted Material:	\$5.99
Dracaena,Fuschia, Ivy Geraniums, Geraniums, Scaevola, Bacopa, Begonias,, Verbena; Nemesia; Ornamental Grasses	
Sunpatiens, New Guinea Impatiens, Million Bells, Petunias (& wave), Argyanthemum, and so much more	
6"- large potted plants, Gerbera	\$6.99
6" Mina's, Cobaea with Trellis (Hairy Legs)	8.99 & 6" Veggie pots, individually priced
Jumbo 5.5- Sunfinity Sunflower	\$11.99 Large pots-\$17.99
Jumbo 5.5- Ornamental Annual Grass, Canna, Mandevilla Martha	11.99
3.5"- Geraniums grown from seed:	2.99
3.5"- Ever popular Wave Petunias:	3.99
Patio Tomato Tubs:-large & fruited	\$19.99
Fertilize 2-3 times a week with 1/2 strength water soluble fertilizer (the blue stuff) & keep plants damp, but not soggy	
8" Hanging Baskets, assorted contents	17.99
10" Hanging Basket Boston Fern [very large & full]	\$36.99
10" Hanging Baskets: (very large & full of growth-large selection)	21.99 or 3/62.99 = 20.99e
10" Hanging Basket Tomatoes & Strawberry	17.99
12" hanging baskets, plastic	36.99
12" Wire Baskets (filled with flowers growing in a ball)	\$46.99- Solenia Begonia in a Ball \$65.99;
16" Wire Baskets (filled with flowers & growing in a ball)	wave pet -\$55.99 (mix \$65.99);
16" pans with Vistas	46.99
24" MONSTER Wave Petunia Baskets	99.99
24" Flower Pouch: very large & full of growth	17.99
8" mum pot... HUGE & GORGEOUS	\$10.99 or 3/\$29.99
perennial paks (4/pak)	5.99/ mostly 4/pak ; sng pots 3.99 (3") pot 4.99
annual paks (most contain 6/pak)	3.99; sml pots 2.99
herb paks (contains 4 plants each pak)	3.99; sml pots 2.99- 4.99
Veggie paks (4 or 6 pak)	3.99; sml pots 2.99- 4.99
variety herb patio containers	\$15.99 - 29.99

Helpful Hints:

Stay up to date with sales, news, and events by signing up for our newsletter at villagenursery.ca
 & Follow us on [Facebook](#) & [Instagram](#)

We will custom fill your containers according to your requests or we will help you to decide what you like. We use new soil every year so you may empty the old soil on your compost pile & wash your pots up nice & spiffy. We will keep your containers until mid-June at no extra cost. All lay-a-ways must be picked up by mid-June or they will be recycled. Sorry please honor our policy on this. It is also very hot in the greenhouses by this time & your wonderful creations will start to deteriorate in that heat.

Helpful Hint: containers need new soil & a proper slow-release fertilizer to keep plants growing & blooming. Always use water soluble (the blue stuff) often Plants grown in containers have special needs. One of the mistakes a new gardener makes is to use topsoil from their in ground garden to pot up their plants.

BIG BIG MISTAKE!!!!

There are no nutrients, airspace, & it's too dense for proper drainage & root development. It is important to use a good quality potting soil & never the cheapest

one offered by some chain stores. Never ever re-use old soil from your containers for next year's plants. Dump it in your in-ground garden or compost.

Roses

Key Terms:

Wd – Well-drained
CTS - Continuous
W - Woodland
HR – Humus Rich
DH - Deadhead

Pricing: \$31.99

Bold = new this year!

Errors in pricing can occur. All prices are final at checkout.

Blaze Climber	climber	train canes back & forth on trellis 4 more blooms, best red, blooms spring to fall, after established prune back lateral stem
Aurora Borealis™	shrub	3'h- features black spot resistance and winter hardiness across Canada. Sunset Pink - CTS
Carefree Sunshine™	climber	3-4'- Everblooming. DH, fragrant
Carpet Pink Supreme Flower®	climber	10' fully double; repeat blooming; Hyb T; soft Peaarl Pink; lightly fragrant
Carpet Red Flower®	GC/Shrub	18" Fully double bright white flowers begin blooming in spring and display a season-long show.
Carpet Yellow	GC/Shrub	3x3'; large sprays of attractive yellow flowers that will not fade in the sun. A mid-season that repeats throughout the season. This mildly fragrant,
Catherine Hershey™	floribunda	3'- carefree & tough Soft peach, long blooming with a quick repeat & with a hint of Lemon and spice
Dee-Lish®	Hyb T	Large, 4" across, fully double Deep Pink. Very strong fragrance of Verbena & Citrus
Easy Going™	floribunda	3-5'- brighter green foliage and a delectable peachy golden yellow color that holds to the very end. Peach/Yellow; mild honey fragrance
Icecap™	floribunda	30" x 42" a repeat bloomer; a dense flush of pure white, ruffled, cupped flowers on a compact, rounded shrub,
Julia Child	floribunda	4 x4' - CTS Luscious Butter-yellow 4" blooms and licorice-like scent
Knock Out Peachy	shrub	CTS all season until late in fall compact shrub which produces abundant clusters of semi double shell pink blooms up to 3" across
Kosmos Fairy Tale™	floribunda	3-4', upright blooms in large clusters of medium-to-large, very full, creamy white with peachy centre;Repeats, fragrant
Lady In Red	climber	10'-a neat and compact climber that produce large displays of huge ruffled dark red flowers. Blooms do not fade. Slightly fragrant;

Lemon Meringue	climber	6-8'; repeats, very fragrant yellow; blooms on NU wood so prune very early
Marmalade Skies	floribunda	3 x 3'- re blooming, brilliant orange semi double, slightly fragrant
Maxi Vita®	floribunda	3' x 2'w- Semi-double blooms of charming orange- with a yellow-orange base produce waves of colour in the garden throughout the season. No fragrance
Nicolas	climber	4' semi double deep red , fragrant flowers bloom freely in mid-season with fall repeat.Mild fragrance
Night Owl™	climber	10-14'- a deep, wine-purple Climbing Rose with large clusters of single spicy, clove-scented blooms , a repeat bloomer
Prima Donna	grandflora	5-6'- high-centered 4-5" deep pink double flowers on long stems. Reflexed petals; fragrance sweet
Queen Elizabeth	grandflora	5-7'- Heirloom Rose- Soft Pink, lightly fragrant. Very highly sought after by Rose gardeners NEEDS FULL SUN
Rosa Rugosa	shrub	6'- very hardy bright pink,fragrant blooms in summer & intermittenly; remove spent blooms for better blooms but not after early August to allow hips
Rosie the Riveter™	floribunda	3 x 3'- Heirloom CTS Fully double deep orange gold. Moderate fruity spicy fragrance.
Royal City	floribunda	4'- CTS, spring to frost. Salmon/Pink. Grows with incredible vigor mild fragrance
Sexy Remy	floribunda	3' -Heirloom, lightly fragrant. 3.5" blooms of Soft Pink
Sonnenwelt™	Shrub	5'-vibrant apricot flowers imbued in a rich fragrance. Repeat bloomer
Tangerine Skies Arborose	climber	8' - Heirloom, rapid climber, delightful strong scent, Bright mango-Tangerine double blooms
Yukon Sun™	shrub	3' - Compact early CTS Bright Yellow, slight fragrance

Helpful Hints:

Use a proper Rose fertilizer for the best results and don't splash water on the leaves. Roses are heavy feeders and require a water-soluble fertilizer like PEI fish fertilizer or other water soluble every three weeks. Always make sure that the liquid goes right to the root. This is good info for any plant! Top dressing would be much better, and we recommend this as roses are heavy feeders. The proper roses food suggested is made specifically for roses and contains the necessary trace elements needed by the plant to perform well.

Floribundas/Austins are continuous bloomers. Add a handful of Epsom Salts every 2-3 weeks. Apply on the drip line.

Climbing /Rugosa/Miniature/Hedging roses blooms on old wood. If you prune in the spring, you will have no flowers that season.

Growing climbing roses requires training as they will usually grow quite wayward. Use a good sturdy trellis & ties that will degrade over the years. The plant must be tied as it grows & some pruning will be required to keep the plant in a somewhat reasonable size. A dead tree would be a perfect trellis.

Perhaps Rugosa Rose is the most popular species used for hedging. It is dense, hardy, colorful & has healthy foliage.

Hybrid T/Grandifloras/Floribundas/English roses need to be cut back to 8-12" from the ground in the very late fall/early winter (to avoid the wind shaking the roots loose). If you prune too early in the fall, they can think it is spring and start to put out new growth which of course will freeze out.

Black Spot & powdery mildew -use a fungicide-Defender is a good rose product for rose care.

Don't water the leaves and be especially careful when the sun is out. Defender is a good product for rose care.

Clay soil is usually recommended for planting because of its ability to hold water. You will have to use organic matter to make your soil more pliable. Two sources would be 'real' old fashion aged manure is the best (or store-bought would work but no cheapies) or compost, always well broken down. Peat moss is always a valuable soil conditioner. Roses must have a consistent supply of water and nutrients to grow.

Trees

Key Terms:

Wd – Well drained	LM – Leaf Mold
M – Moist	F – Fertile

W – Woodland	MT – Moisture Retentive
HR – Humus Rich	X – Excellent
DH – Deadhead	Gc – Ground Cover
S – Sandy	N – Neutral
PS – Part Shade*	A – Acid
FS – Full Sun	^ - Requires winter protection
P – Poor	Alk – Alkaline

*Part Shade: This usually means that the plant will require early morning sun opposed to noonday sun.

Bold = new this year!

Errors in pricing can occur. All prices are at checkout are final.

Species	Culture	Price
Acer pal Bloodgood	sun-ps/M/wd/f/prune-25', deep red-purple deeply cut foliage; winged fruit; an outstanding specimen	\$99.99
Acer f Autumn Blaze	sun-ps/M/wd/f/50-60'-fast growing, glorious fall color, dense oval growing habit	\$199.99
Acer plat Emerald Queen	sun-ps/M/wd/f/ 40-50'; fast growing, green leaf, great fall color	\$229.99
Acer pal Gwen's Delight	sun-ps/M/wd/f- 15 x 15'-'Shirazz Japanese Maple- new foliage emerges pink to green with pink; fall color blazing red	\$99.99
Acer plat Harlequinn	sun-ps/M/wd/f-40'-white-variegated light green foliage throughout the season. Leaves turn yellow in fall	\$199.99
Acer pal Tamukeyama	sun-ps/M/wd/f -cascades to 8' in 10 yrs; one of the fastest growing dissectums; deep red to purple scarlet in fall.	\$99.99
Acer pal Lion's Head	sun-ps/M/wd/f-20', upright; Leaves held in close knit bunches. Give some protection: Crinkled bright green leaves	\$99.99
Acer pal Red Pigmy	sun-ps/M/wd/f/5-7'Threadleaf one of the best Japanese Maples. Mound-shaped tree, with reddish-purple turn scarlet in autumn.	\$99.99
Acer r Red Sunset	sun-ps/M/wd/f/50'- pyramid shape with age, turn a brilliant orange-scarlet when temperatures begin to cool	\$199.99
Aralia spinosa	sun-ps/hr/M/prune e.spring- 12', thorny stems & leaves, dramatic foliage, white plume flowers, buds & flowers break late	\$24.99
Balm of Gilead	sun/M/rich-75'-(Populus balsamifera) fragrant wax saturates winter buds & coats the young leaves in spring gives this tree its name	
Cercis can Redbud	F sun/M/wd-30h x 35'w- heart-shaped leaves and striking pink to purplish spring flowers. Moderate growth rate	59.99/3g
Cornus kousa Satomi	Sun/ rich/ M/wd/ A&S soil -25'-multi stemmed; slow growing; blooms early white blooms; beneficials	\$299.99
Gleditsia tri Sunburst	85'-vase shaped canopy with bright yellow young pendulous leaves that ripen to a lime green colour soft weeping foliage.	\$169.99
Magnolia Leonard Messil	sun-ps/wd/M-15-20' - Fragrant 4" flowers open from purple buds to deep pink with white inside;	\$249.99
Magnolia Susan	Sun-ps/Wd/M-10'-(small tree) impact shrubby habit, slightly fragrant, fuchsia flowers, blooms late April early May. slow-growing	\$166.99
Magnolia Royal Star	Sun-ps/Wd/M-15'--slow growing slightly fragrant 3-4" star-shaped WHITE flowers; flowers open before leaves	\$229.99
Malus Louisa	Sun-ps/Wd/M-15- 20'- excellent weeper with good disease resistance; Red buds open in spring to single fragrant pink flowers	\$179.99
Malus Prarie Fire	Sun/Wd/M/F-20'n upright, rounded with a long season of interest. from pinkish-red buds to slightly fragrant, dark pink to red flowers appear in mid-late spring.	\$179.99
Morus a pendula	sun/wd/avg-8'-mature pink fruit very tasty; arching branches droop to the ground; lovely specimen tree	\$249.99
Popular Silver	Sun/ mostly any soil; 20' closely related to Aspens; silver-green foliage...pretty...it does send up suckers	\$29.99
Prunus c Crimson Pointe	Full sun/avg/M/wd- 20 x 8'- columinar pink flowers in spring with purple foliage all season	\$199.99
Salix alba tristis	sun/M/wd/acidic soil-50-75', known as golden weeping willow	\$199.99
Tila Boulevard	sun/wd/med M- 60' with limited spread -great street & shade tree' extra-large leaves; long cluster of fragrant blooms in summer;	\$199.99

Helpful Hints:

When planting large trees, it is important to stake the tree with 3 stakes to keep the wind from shaking the roots loose. Use proper ties so as not to damage the bark. Also, before planting, prepare & water the hole well. All newly planted material must be well watered right up to freeze-up.

During the first couple of growing seasons, your newly planted tree is expending a lot of energy trying to get its roots established in the soil. It is important NOT to depend on the rain to water deep enough to support healthy roots. Keep grass well away from the tree trunk so as not to do damage from the mower.

Veggies

Pricing: \$3.99/pack (4-6 plants per pack)

Single pots starting at \$2.99

We also carry a good selection of ready-to-go patio tomatoes (\$19.99) and other ready-to-go veggies and herbs.

Errors in pricing can happen. All prices are final at checkout.

Arugula Myway	nutty flavor used in salads..this is a real good herb & good for you also
Beans	yellow & green
Beets	Cylindrical.... Nice for slicing & pickling; the beets were popular with shopper's for transplanting
Broccoli	Destiny
B.Sprout	Jade Cross
Cabbage	Stonehead early, Multikeeper late, red, savoy,regular sized pak choi
Carrots	Orangeblaze10"variety & Rainbow blend- the carrots were popular with shopper's for transplanting
Celeriac	the root or knob is the edible part-generally known as the rooted celery
Celery	Giant Pascal
C'flower	Amazing
Corn	Delectable-bi-color
Cukes	Cucumelon- grape sized cukes crossed with watermelon.Looks exactly like minature melon. Unique
Cukes	Slicemore(the best);Marketmore regular,english,pickling & heirloom Lemon(heirloom) ;Diva(lunchbox) & several lunch box varieties
Eggplant	Rosa Banca & Classic
Gourds	a mixed variety
Husk cherry	Aunt Molly's golden husk cherries, excellent to eat once the husks dry...mmmm yummy
Kale	Darkibor;Dinosaur;Red Russian & Winterbor(common- salads(remove heavy veins)full of nutrients,
Kohlrabi	Vienna white
Lettuce	Red Sails,oakleaf, buttercrunch,green & red; leaf,head, red, romaine, & mesclun mix
Onion	Leeks,red,spanish,yellow winter; bunching, Walla Walla(similar to Vidahlia)
Peas	Premiun Early...tall variety; climbing. The peas were popular with shopper's for transplanting
Pepper	Sweet- green, red, yellow,orange,purple, banana,pimento,Hot-cayenne,Chili, Habanero,Jalapeno& sweet heat
Pumpkin	Dills, Small Sugar & Howden
Radish	Early variety
Spinach	Green Beret- slow to bolt
Squash	Summer- yellow & green zucchin & Winter varieties incl. Spaghetti
Strawberry	Compact, hardy plants produce a pleasing plethora of very sweet, conical mid-sized fruit on strong stems. Large,
Swiss Chard	red & white
Tomato	Pear-red&yellow;Cherry-tiny tim; sw 100 & Sw million; Sun Sugar; Sugar Rush;cherry patio;Rapunzel
	Red Profusion; Indigo Cherry Drops ; + others
	Heirloom- Amish Paste;Brandywine; Cherokee Purple;Jubilee; Mortgage Lifter; San Moranzo;
	Low Acid-Jubilee; Sub Sugar, Sugar Rush Sungold; Paste-Roma; Regular- Scotia; Celebrity;
	Beefsteak-beefsteak & Big Beef; Grape- Juliet
Turnip	Laurentian...a winter keeper
Watermelon	Sugar Baby; with a warm environment & rich soil these can easily reach 20lbs

Vines

Key Terms:

Wd – Well drained	LM – Leaf Mold
M – Moist	F – Fertile
W – Woodland	MT – Moisture Retentive
HR – Humus Rich	X – Excellent
DH – Deadhead	Gc – Ground Cover
S – Sandy	N – Neutral
PS – Part Shade*	A – Acid
FS – Full Sun	^ - Requires winter protection
P – Poor	Alk – Alkaline

*Part Shade: This usually means that the plant will require early morning sun opposed to noonday sun.

Bold = new this year!

Errors in pricing can occur. All prices are at checkout are final.

Kiwi	Actinidia-Both male & female are required for fruit production. Twining vine/prune late winter. SUN-F/ WD soil with shelter from strong winds	\$39.99
	Issai self-fruitful the smooth skinned green fruit are the size of grapes and taste like a sweet tropical kiwi without the fuzzy skin	
Ampelopsis brev	sun-ps/M/HR-up to 20' - Porcelain Berry- aggressive but not so much in colder climates	\$39.99
	Elegans-variegated. New color has white, green & pink. Small lilac-blue berries In the fall	
Celastris	American Bittersweet Sun/wd-HR/M- up to 20' in length	
	Diane & Hercules highly colored red berries with yellow shells. Berries widely used in floral arrangements	\$46.99
Clematis	Grow in fertile, humus rich, moist well drained soil. Sun Keep roots & base	\$22.99
group 1	of plant in the shade. Mulch heavy in late winter	
no pruning required	Dr Ruppel-produces masses of particularly beautiful, delicately ruffled, pale pink flowers, up to 5-8"	(group 3)
group 2	Jackmanii- 8' - 5" blooms are a delicious dark purple, making it on of the prettiest flowering vines.	(group 2)
prune out dead wood	Mrs N Thompson - bold violet star-shaped flowers with red stripes	(group 2)
	Multi Blue -produces a profusion of stunning deep blue, double flowers, 4-5"	(group 2)
in early spring, after bloom cut back 1/2	Ernest Markham-10-12'-covered with a profusion of large, 4-6", vivid magenta flowers; prune hard early	(group 2)
	Nelly Moser-10'- lowers, up to 8 in. (20 cm), with 8 pink-lilac sepals, each with a carmine stripe	(group 2)
& plant will re-bloom	The President-10'-flowers, up to 7 in. (18 cm), in shades of rich violet-blue	(group 1)
group 3	Hagley Hybrid-6-8'- shell pink with contrasting Red anthers & a touch of Lavender	(group 3)
prune to the ground	Henryi-15'- blooms early & late; a large, vigorous climber with huge, luminous, pure white flowers, 6-8". across	(group 3)
blooms on nu wood	int Blue Ribbons-very large, 1¾" indigo blue flowers, up to three times larger than typical! Bush type, non-vining	(group 3)
Euonymus f	Purple Creeper Full Sun-Ps/wd- 20' fast growing, good for erosion control dark green leaves BLE'Grn	19.99
Hedera helix	sun-ps/ HR/wd/M- excellent ground cover to deal with soil erosion	
	Thorndale English Ivy -grey-green foliage edged in chartreuse to bright yellow color. Esy to grow & very rewarding	\$12.99
Hydrangea a	petiolaris-wd soil, part sun; sprawling deciduous vine reaching 40 plus feet. White flowers mid-summer	\$46.99
Lonicera	Honeysuckle- up to 15 feet in fertile, humus rich, moist well drained soil,Sun/Ps, prune spring	
Lonicera peric	Scentsation-Vigorous, considered the most scented ,intensely fragrant, cream&yellow flowers from late spring - summer	\$39.99
Lonicera brownii	Dropmore Scarlet-long blooming season of showy flaming red tubular flower clusters with yellow throats. NOT fragrant	\$29.99
Lonicera hect	Goldflame purple to deep pink -purple buds open to sweetly fragrant yellow trumpet-like blooms	\$29.99
Lonicera jap	Halliana-sun-ps/avg well drained soil-fragrant twining pure white to pale yellow late spring to late summer	\$29.99
	Cobaea scandens ANNUAL V. fast growing & very large cover-up for 1 season	6.99/6" pot

	Mina lobata- vigorous growing ANNUAL vine that blooms all summer in orange yellow & white	\$6.99 / 6"pot
Parthenocissus	qu Virginia Creeper-Its root-like tendrils attach themselves to any non-smooth surface, even brick, also a ground cover.	\$41.99
Vinca	Bowles -very fast growing,leaves green ,blooms with a violet flower; does well in a shady area	\$9.99
Wisteria	Blooms in early Spring. Plant in fertile, moist but well-drained soil.Sun/Ps..12-20" long flowers	
	Blue Moon-30'-one of the hardiest; highly tolerant to cold and features stunning chains of lavender flowers 3 x a year	39.99
Parthenocissus	Plant in any fertile, well drained soil in shade or sun.	
	qu Virginia Creeper-Its root-like tendrils attach themselves to any non-smooth surface, even brick, also a ground cover.	\$29.99
	tri. Boston Ivy-an elegant, climbing vine that is often seen as a decorative addition to the sides of buildings.	\$39.99
Vinca	Vinca Bowles variety -very fast growing,leaves green ,blooms with a violet flower; does well in a shady area	\$9.99
Wisteria	Vigorous, twining climber to 28' or more.sometimes plant needs to be restricted(tied tight) to bloom	
	Blooms in early Spring. Plant in fertile, moist but well-drained soil.Sun/Ps..12-20" long flowers	
	m. Summer Cascade-15'-fragrant lavender-blue flowers are foot-long racemes that are like enormous grape clusters!	\$49.99

Water Plants

Key Terms:

#1 – Hardy, shallow water (2-4”) or consistently wet
#2 – Tropical, shallow water (2-4”) or consistently wet: submerged
#3 – Water Lilies: plant 3-4' deep
#4 – Floating
#5 – Submerged oxygenators: act as natural filters

Errors in pricing can occur. All prices are final at checkout.

Caltha paultris Plena	#1 -much loved for their showy yellow buttercups that grace stream sides and other wet places in early spring	\$ 9.99
Iris ensata(Japanese)	#1- many lovely colors to choose from and an excellent choice for water gardens	see perennial
Iris Louisiana Blk Gamecock	#1-sun/M-huge deep purple blooms with gold highlights on each petal; vigorous	\$ 16.99
Iris ps Cat's Eye	#1- sun/M-dwarf-clumps of rich rose-red blooms bear deep red centres; earliest to bloom	\$ 26.99
Iris pseu Tsukiyono	#1- sun/M- 3-4'-pale lavender flowers adorned with deep purple eyelash	\$ 16.99
Iris siberican	#1- many lovely colors to choose from and an excellent choice for along borders of water gardens	see perennial
Juncus e spiralis	#1- Sun-Ps corkscrew-like green foliage, interesting 18-24"	\$ 5.69
Lobelia Starship Scarlet	#1- sun/wd/HR-2'; Free flowering,floriferous,very attractive to hummers; scarlet blooms & near black stems	\$ 9.99
Lysmachia(creeping Jenny)	#1- bright green wavy leaves, aggressive ground cover.	\$ 4.99
Papyrus	#4-3 sizes.King,Medium & Prince- starburst heads;X background for other watergarden plants (NOT HARDY)	\$ 9.99
Water Hyacinth	#4- lrg thick leaves with lavender fls,very nice, use proper fertilizer	\$ 9.99
Water Lettuce	#4- grows floating on the surface water, and its leaves form a rosette, with dense, submerged roots beneath it.	\$ 9.99
Water Lily Charles de Meurville	#3- free-flowering, hardy waterlily producing an abundance of large red-pink blooms with bright orange stamens	\$ 31.99
Water Lily Marliac	#3-Very clear white flower that tends to stay open longer than most. The flower size is 4 - 6" in diameter and	\$ 31.99
Water Lily Pink Sensation	#3-beautiful & the best bright rosy pink, 4" flowers from spring into fall; very fragrant	\$ 31.99